
BAY CRANE

WWW.BAYCRANE.COM

80,000 Lbs

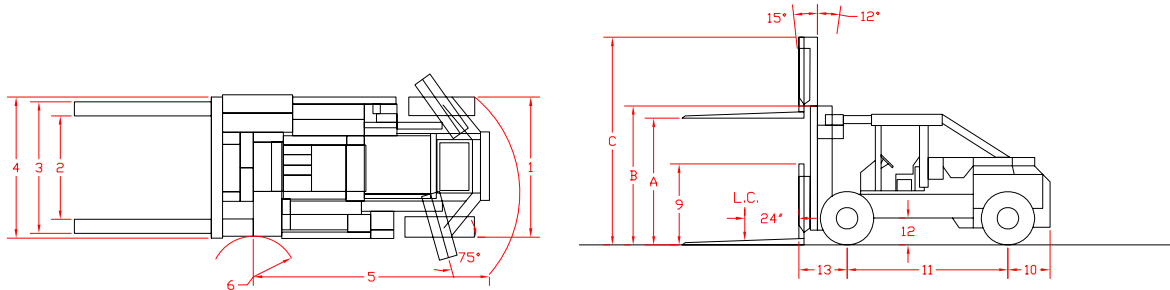


**Bristol RS80 Forklift
Specification Sheets**

BAY CRANE

www.baycrane.com

BRISTOL 40 Ton FORKLIFT TRUCK



80,000LBS @ 24" LOAD CENTER

Total Weight of Chassis: 44,640 lbs
 Small Center Cwt: 11,305 lbs
 Main Cwt: 16,160 lbs
 Boom & Rest Wt. ~4,000 lbs

A = 98"			
B = 106"			
C = 161"			
1 - WIDTH ACROSS COUNTERWEIGHT			95.5"
2 - TREAD WIDTH, DRIVE AXLE			74.4"
3 - FORK SPREAD(STANDARD)			98.0"
4 - WIDTH OVER TIRES			101.5"
5 - OUTSIDE TURN RADIUS (TAIL SWING)			196.0"
6 - INSIDE TURN RADIUS			23.25"
7 - HEIGHT TO TOP OF "A" FRAME			102.0"
8 - HEIGHT TO TOP OF COUNTERWEIGHT			VARIES
9 - HEIGHT TO TOP OF CARRIAGE			99.0"
10 - STEER AXLE, CL TO REAR OF COUNTERWEIGHT			37.0"
11 - WHEELBASE			127.0"
12 - UNDERCLEARANCE (MAST)			4.0"
13 - DRIVE AXLE CL TO CARRIAGE FACE			37.5"
14 - OVERALL LENGTH, LESS FORKS			199.0"
MIN. AISLE / RIGHTANGLE STACK (LOAD LENGTH)			227.5"
GRADEABILITY		EMPTY	31.2%
		LOADED	51.3%
GRADE CLEARANCE		CENTER OF TRUCK	63%
		REAR OVERHANG	48%
TIRES		10:00X20 SOLO MATIC	
90 DEGREE MIN. INTERSECTING AISLE			161.6"
		EMPTY	LOADED
TRAVEL SPEED	1ST.	2.0 MPH	2.0 MPH
	2ND.	4.0 MPH	4.0 MPH
	3RD.	11.0 MPH	N.A.

NEW YORK CITY OFFICE
 11-02 43RD AVENUE
 LONG ISLAND CITY, NY 11101
 TEL: (718) 392-0800
 FAX: (718) 349-6681

LONG ISLAND OFFICE
 389 NEW SOUTH ROAD
 HICKSVILLE, NY 11801
 TEL: (516) 937-1523
 FAX: (516) 937-3672

info@baycrane.com

BAY CRANE

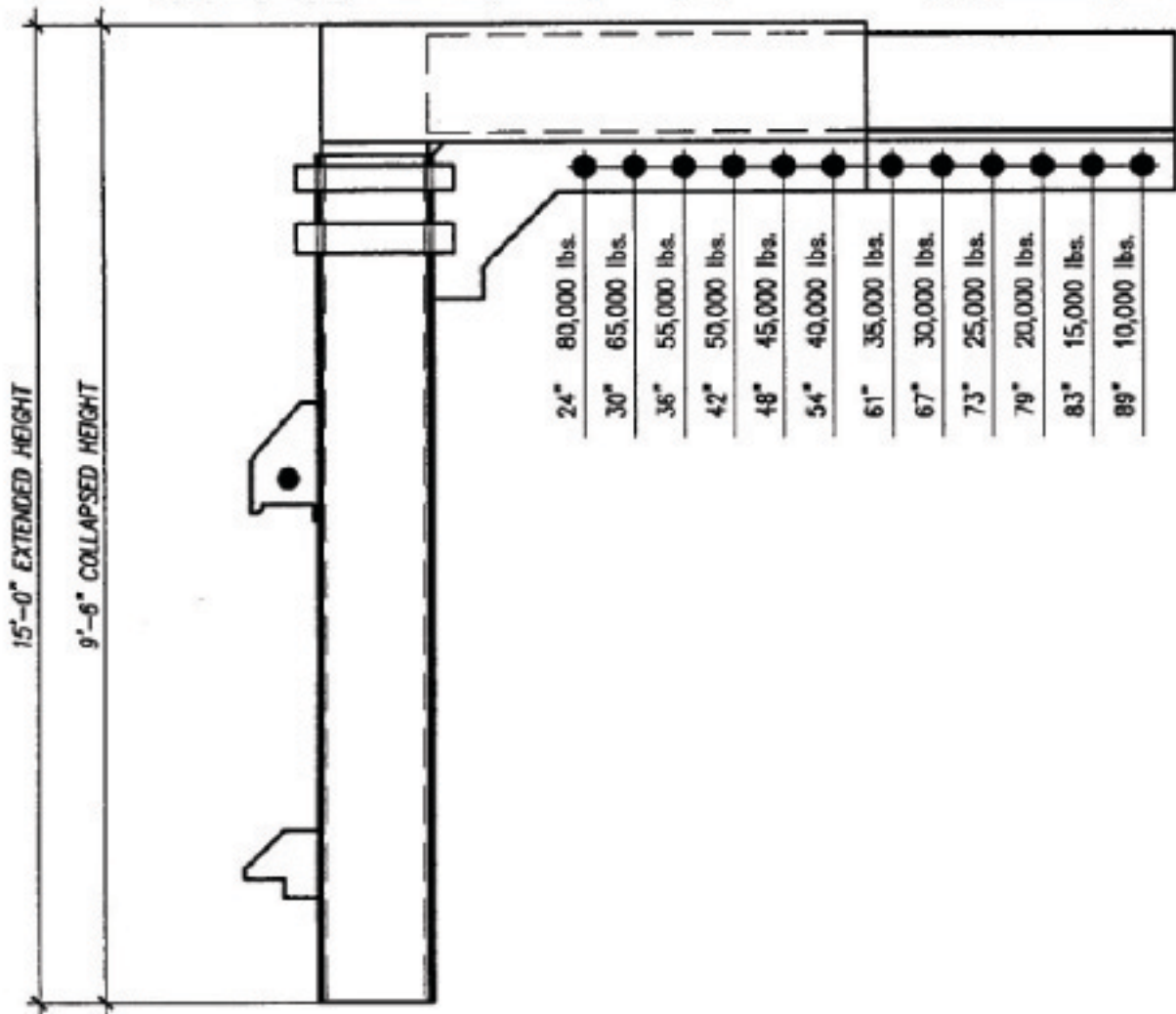
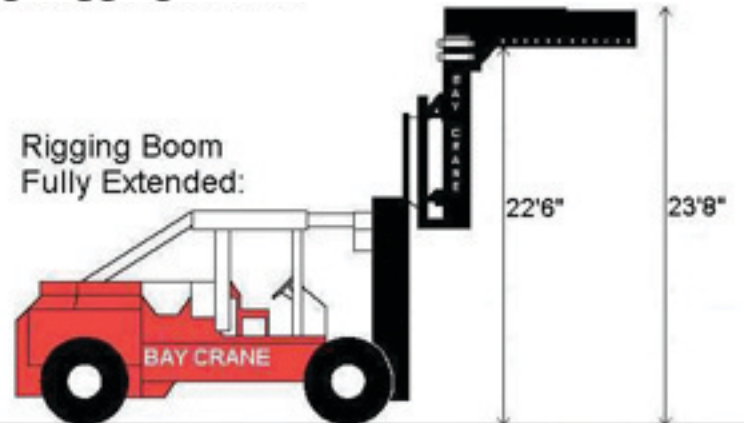
www.baycrane.com

Optional Telescoping Rigging Boom

Rigging Boom Retracted:



Rigging Boom Fully Extended:



NEW YORK CITY OFFICE
11-02 43RD AVENUE
LONG ISLAND CITY, NY 11101
TEL: (718) 392-0800
FAX: (718) 349-6681

LONG ISLAND OFFICE
389 NEW SOUTH ROAD
HICKSVILLE, NY 11801
TEL: (516) 937-1523
FAX: (516) 937-3672

info@baycrane.com