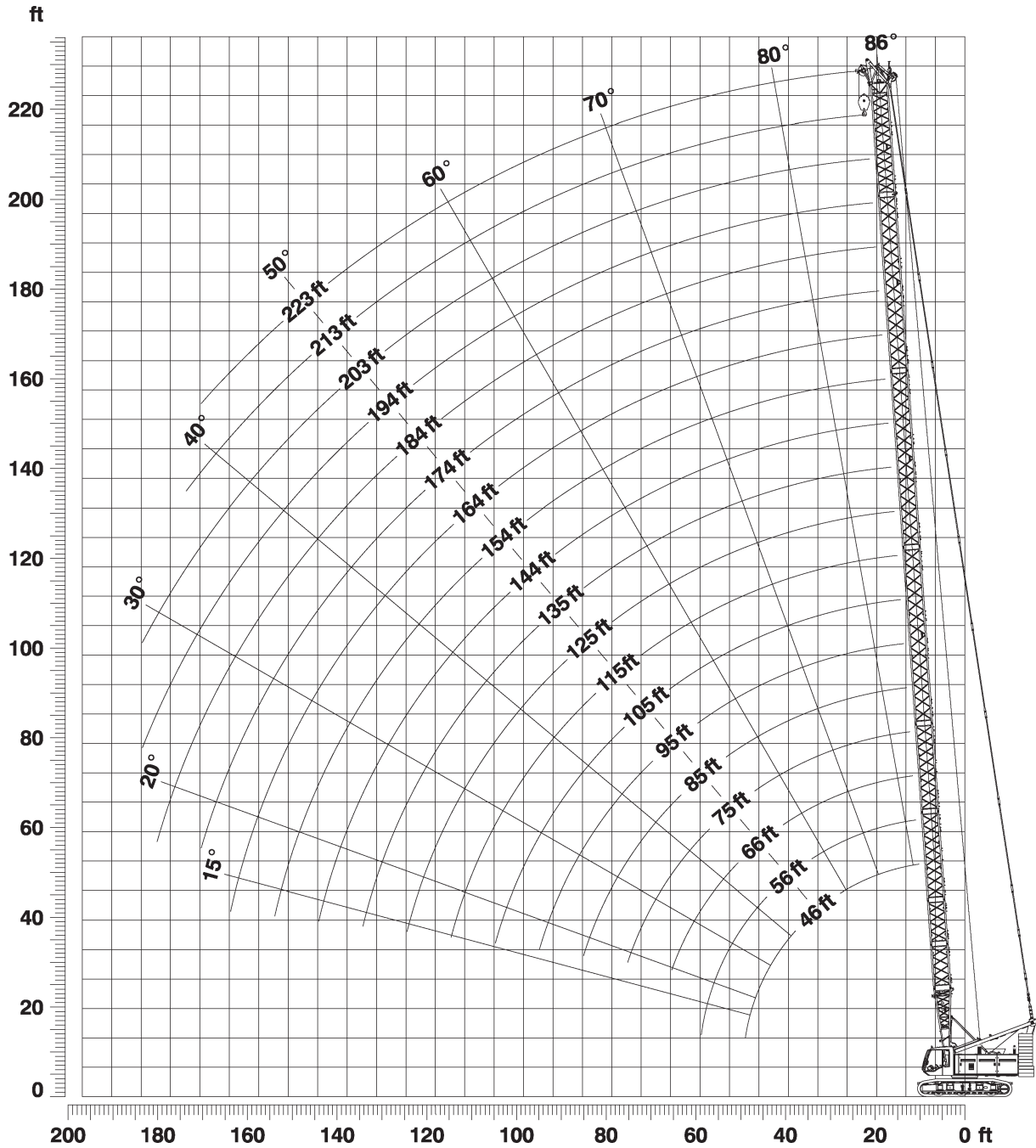


Load Blocks	Capacity	Sheaves	Weight
	???.? tons	?	?,???
	???.? tons	?	???



main boom (1311)



LIEBHERR LR 1100

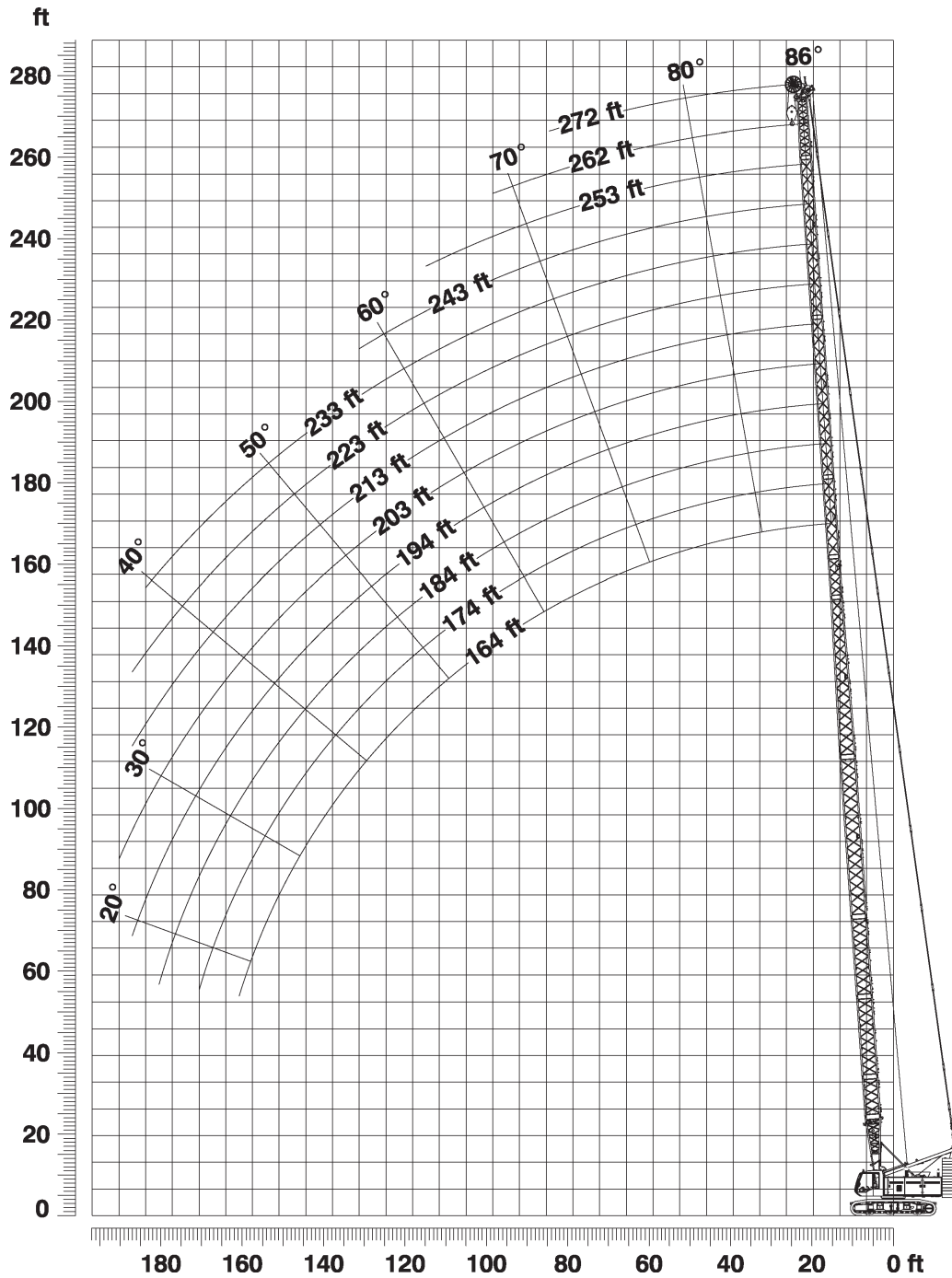
main boom (1311)

 46-223 ft	 16'7"	 71200 lbs	 360°	 85%
--	--	--	--	--

 Ft	46	66	85	105	125	144	164	184	203	223	 Ft
10.2	230.3										10.2
15	230.3	223.1	199.5	147.8							15
20	146.2	146.5	143.7	141.8	110.5	80.8	62.1	46.3			20
25	104.1	104.3	101.3	104.2	98.5	79.7	61.2	45.7	36.9	30.1	25
30	80.3	80.4	80.3	80.3	80	77.7	60.5	44.9	36.4	29.2	30
35	64.9	65.1	65	64.9	64.6	64.3	59.9	44.1	35.4	28.5	35
40	54.2	54.4	54.2	54.1	53.8	53.6	53.2	43.5	34.5	27.6	40
45	46.2	46.5	46.3	46.2	45.9	45.6	45.2	42.1	33.8	27	45
60		31.7	31.6	31.4	31.1	30.8	30.3	30	29.6	22.2	60
65		28.4	28.3	28.2	27.8	27.5	27.1	26.7	26.5	22.2	65
80			21.3	21.2	20.8	20.5	20.1	19.8	19.3	18.8	80
85			19.5	19.4	19.1	18.8	18.3	18	17.5	17	85
95				16.5	16.1	15.9	15.4	15	14.6	14.1	95
100				15.2	14.9	14.6	14.2	13.8	13.3	12.8	100
110					12.8	12.5	12.1	11.7	11.2	10.7	110
115					11.8	11.6	11.1	10.8	10.3	9.8	115
120					11	10.8	10.3	10	9.5	9	120
130						9.3	8.8	8.5	8	7.5	130
135						8.6	8.2	7.8	7.4	6.8	135
140						8	7.6	7.2	6.8	6.2	140
150							6.5	6.2	5.7	5.2	150
155							6	5.7	5.2	4.7	155
160							5.5	5.2	4.7	4.2	160
170								4.4	3.9	3.4	170
175								4	3.5	3	175
180								3.6	3.2	2.7	180
190									2.5	2	190
195									2.2		195






with 33,100 lbs carbody counterweight



L-boom high reach (1311/1008)



LIEBHERR LR 1100

L-boom high reach (1311/1008)






 107 ft L=164-272 ft	 16'7"	 71200 lbs	 360°	 85%
---	--	--	--	--



	164	203	243	272	
17	62.3				17
20	62	35			20
25	61	34.1	17.3	12.1	25
30	60	32.9	16.6	10.9	30
35	59.2	31.6	15.9	10.3	35
40	54.5	30.3	15.1	9.8	40
45	46.5	28.9	14.6	9.2	45
50	40.5	27.8	13.8	8.8	50
55	35.6	25.7	13.2	8.3	55
60	31.7	24.9	12.6	7.9	60
65	28.5	24.4	12	7.5	65
70	25.9	23	11.5	7.1	70
75	23.5	21.9	11.1	6.8	75
80	21.5	21	10.7	6.5	80
85	19.8	19.5	10.2	6.3	85
90	18.2	18	9.8	6	90
95	16.9	16.6	9.5	5.7	95
100	15.6	15.4	9.2	5.5	100
105	14.5	14.3	8.7	5.3	105
110	13.6	13.3	8.3	5.2	110
115	12.6	12.4	8	4.9	115
120	11.8	11.6	7.7	4.7	120
125	11.1	10.8	7.4	4.4	125
130	10.4	10.1	7.2	4.3	130
135	9.7	9.5	7	4.1	135
140	9.1	8.9	6.8	4	140
150	8	7.8	6.4	3.6	150
155	7.6	7.3	6.3	3.5	155
160	7.1	6.9	6.1	3.4	160
200		4.1	3.7	2.7	200
225			2.5	2.1	225
235			2		235

with 33,100 lbs carbody counterweight

LIEBHERR LR 1100

L-boom high reach (1311/1008)

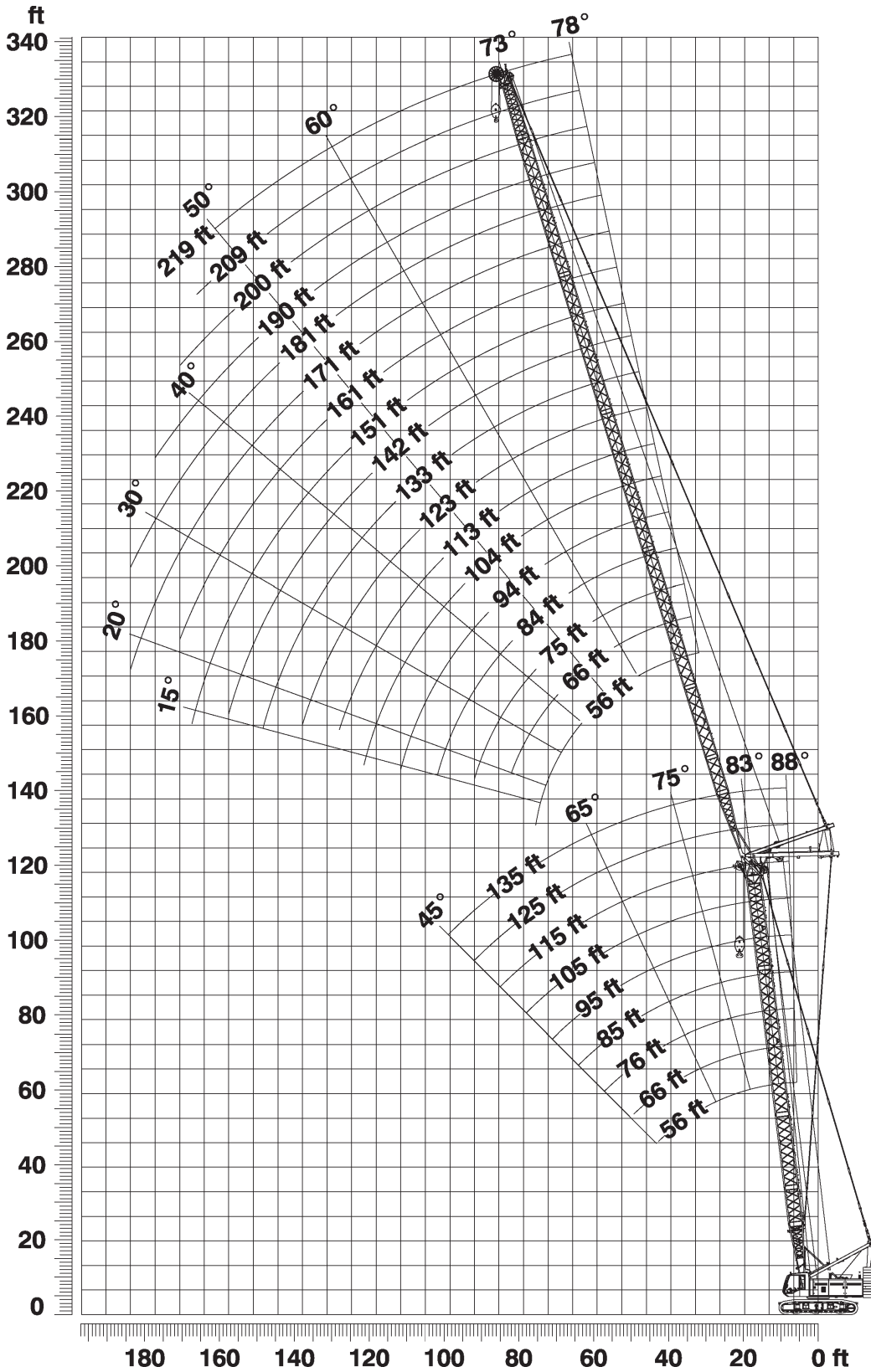
 146 ft L=203-272 ft	 16'7"	 71200 lbs	 360°	 85%
---	--	--	---	---

 Ft	203	223	243	272	 Ft
19.8	37.8				19.8
20	37.8				20
25	37.3	29.6	22.1	15.7	25
30	36.7	28.6	21.3	13.8	30
35	36.2	27.6	20.8	13	35
40	35.6	26.8	19.9	12.5	40
45	34.6	24.7	19.2	12	45
50	34	24	17.5	11.6	50
55	32.8	23.3	16.1	11	55
60	30.9	22.1	15.3	10.5	60
65	27.7	21.2	14.8	10.1	65
70	25.1	20.4	14.5	9.7	70
75	22.7	19.5	14.2	9.3	75
80	20.7	18.7	13.8	9	80
85	19	18	13.4	8.7	85
90	17.4	17.2	13.1	8.3	90
95	16	15.9	12.8	7.9	95
100	14.8	14.6	12.5	7.6	100
105	13.7	13.5	12.1	7.3	105
110	12.7	12.5	11.7	7.1	110
115	11.8	11.6	11.4	6.8	115
120	11	10.8	10.7	6.5	120
130	9.5	9.3	9.2	6	130
140	8.3	8.1	8	5.6	140
150	7.2	7	6.9	5.3	150
160	6.3	6.1	6	5	160
170	5.5	5.3	5.2	4.7	170
180	4.7	4.6	4.5	4	180
190	4.1	3.9	3.8	3.4	190
200	3.5	3.3	3.2	2.8	200
215		2.5	2.4	2	215
220			2.2		220

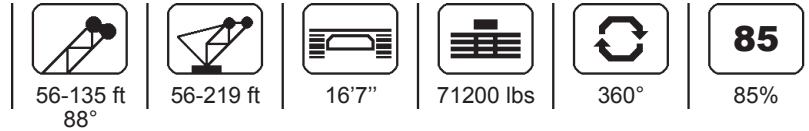
with 33,100 lbs carbody counterweight

### LIEBHERR LR 1100

#### luffing jib (1309)



**luffing jib (1309)**



ft	56								ft
	56	74	94	113	151	171	190	219	
21.5	104.9								21.5
30	85.9	84.5	72.4						30
35	70	69.9	68.2	55.8					35
45	50.8	50.7	50.4	50.1	34.1				45
50	44.5	44.4	44.1	43.9	33.7	27.2	22.2		50
60	35.4	35.4	35.2	34.9	33	25.5	21.2	15.3	60
75		26.8	26.6	26.4	25.8	25.1	20.1	14.2	75
95			19.7	19.5	18.9	18.5	18.1	13.1	95
115				15.1	14.5	14.2	13.8	12.3	115
140					10.9	10.5	10.2	9.6	140
150					9.8	9.4	9.1	8.5	150
170						7.6	7.3	6.7	170
180							6.6	6	180
190							5.9	5.3	190
200								4.7	200
215								3.9	215

ft	75								ft
	56	74	94	113	151	171	190	219	
22.1	96.4								22.1
30	85.9	71.7							30
35	70.1	69.3	55.6	44.3					35
45	50.8	50.7	50.4	42.5	28.7				45
50	44.5	44.4	44.1	41.7	28.2	22.4	19.3		50
60	35.4	35.4	35.2	34.9	27.3	22	18.5	13.8	60
70		29.2	29	28.7	25.5	21.5	18	13.5	70
80		24.7	24.6	24.3	23.7	20.8	17.4	13	80
95			19.7	19.5	18.9	18.5	16.7	12.3	95
115				15.1	14.5	14.1	13.8	11.5	115
150					9.8	9.1	9.1	8.5	150
170						7.6	7.3	6.7	170
180							6.5	6	180
190							5.9	5.3	190
200								4.7	200
215								3.9	215

with 33,100 lbs carbody counterweight

ft	95								ft
	56	74	94	113	151	171	190	219	
22.8	71.5								22.8
30	67.3	55.1							30
35	63.7	53	43.4	36.1					35
45	50.8	48.3	40.6	34.1	23.5				45
50	44.5	44.4	38.9	33.3	23.1	19.3			50
55	39.5	39.4	37.7	32.2	22.7	19	16		55
60	35.4	35.4	35.1	31.2	22.3	18.7	15.8	12.1	60
80		24.7	24.6	24.3	20.4	17.4	14.9	11.4	80
100			17.3	18.2	17.6	16	13.8	10.7	100
115				15.1	14.5	14.1	13	10.3	115
150					9.7	9.4	9.1	8.4	150
170						7.6	7.3	6.7	170
180							6.5	6	180
190							5.8	5.3	190
200								4.7	200
215								3.9	215

ft	115								ft
	56	74	94	113	151	171	190	219	
23.5	52.5								23.5
30	49.8	41.6							30
35	47.4	40	33.5						35
40	45.2	38.5	32.6	27.6					40
45	42.9	36.9	31.8	26.9	19				45
50	40.9	35.3	30.3	25.7	18.7	15.8			50
55	39	33.8	29.2	25.1	18.3	15.5	13.2		55
60	35.4	32.5	28	24.3	17.9	15.3	13	10.1	60
80		21.6	23.7	21.2	16.3	14	12.1	9.3	80
100			17	18.2	14.6	12.8	11.2	8.6	100
115				15.1	13.5	11.9	10.5	8.1	115
155					7.9	8.9	8.6	6.9	155
170						7.6	7.3	6.4	170
190							5.8	5.2	190
200								4.7	200
220								3.6	220

with 33,100 lbs carbody counterweight

ft	125						ft
	56	74	94	113	133	151	
23.9	46.5						23.9
30	44.3	36.9					30
35	42.2	35.6	30.3				35
40	40.3	34.3	29.2	24.6	21		40
45	38.3	32.9	28.3	24	20.3	17.4	45
60	34	29.1	25	21.8	19	16.3	60
65	21.9	27.7	24	21.2	18.3	16	65
80		19.6	21.4	19.1	16.8	14.8	80
100			15.9	16.6	14.9	13.2	100
115				14.3	13.5	12.2	115
135					8.8	10.9	135
155						9.2	155







ft	135			ft
	74	84	94	
28.1	33.4			28.1
35	32	29.4	27.2	35
40	31	28.5	26.2	40
50	28.5	25.8	24.3	50
55	27.2	25	23.4	55
60	24.6	23.7	22.6	60
65	22.6	22.6	21.6	65
70	20.8	21.1	20.9	70
75	19.3	19.5	20.2	75
80	18	18.1	19.3	80
90		14.6	18	90
100			15.4	100

with 33,100 lbs carbody counterweight



### LIEBHERR LR 1100

#### luffing jib (1309)

 56-135 ft 83°	 56-219 ft	 16'7"	 71200 lbs	 360°	 85%
---	--	--	--	--	--

ft	56								ft
	56	74	94	113	151	171	190	219	
31.2	79.2								31.2
40	57.2	57							40
45	49.3	49.1	48.7						45
50	43.2	43	42.7	42.3					50
60	34.4	34.3	34	33.7	32.9				60
65	31.1	31.1	30.7	30.4	29.7	27			65
75		26	25.8	25.5	24.7	24.3	19.9		75
80		24	23.7	23.5	22.7	22.3	19.7	15.1	80
85		22.2	22	21.7	21	20.6	19.7	14.4	85
100			17.8	17.6	16.9	16.5	16.1	13.5	100
120				13.7	13.1	12.7	12.3	11.7	120
160					8.3	8	7.7	7.1	160
175						6.8	6.5	5.9	175
195							5.2	4.6	195
220								3.3	220

ft	75								ft
	56	74	94	113	151	171	190	219	
33.6	70.9								33.6
40	56.5	56.2							40
45	48.7	48.4	48.1						45
65	30.8	30.6	30.3	30	28.7				65
75		25.7	25.4	25.1	24.3	22.1	18.6		75
85		21.9	21.7	21.4	20.6	20.2	18.2	13.2	85
90			20.1	19.8	19.1	18.7	17.9	13.1	90
100			17.5	17.3	16.6	16.2	15.8	12.8	100
110				15.2	14.5	14.1	13.7	12.3	110
120				13.5	12.8	12.4	12	11.2	120
140					10.2	9.8	9.4	8.7	140
160					8.2	7.8	7.5	6.9	160
180						6.3	6	5.4	180
200							4.7	4.2	200
225								3	225

with 33,100 lbs carbody counterweight

ft	95								ft
	56	74	94	113	151	171	190	219	
36	63.9								36
45	48	47.7							45
50	42.1	41.8	41.4						50
55	37.4	37.1	36.7	35.6					55
65	30.3	30.2	29.8	29.4	24				65
70	27.6	27.5	27.2	26.8	23.3	19.7			70
80		23.3	23	22.7	21.9	18.9	15.9		80
85		21.6	21.3	21	20.2	18.7	15.7	11.8	85
105			16.1	15.9	15.2	14.7	14.2	11.3	105
125				12.5	11.8	11.4	11	9.9	125
160					8	7.6	7.3	6.4	160
180						6.1	5.8	5	180
200							4.6	4	200
225								2.8	225

ft	115								ft
	56	74	94	113	151	171	190	219	
38.4	51.6								38.4
45	47.2	41.4							45
50	41.4	40.2	33.6						50
55	36.8	36.5	32.9	27.8					55
70	27.2	27	26.7	24.7	18.5				70
75	24.3	24.9	24.5	23.9	17.9	15.2			75
80		22.9	22.6	22.2	17.4	14.8	12.8		80
90		19.7	19.4	19.1	16.7	14.2	12.4	9.2	90
110			14.9	14.6	13.9	13.2	11.6	8.7	110
125				12.2	11.5	11.1	10.4	8.3	125
165					7.3	7	6.6	5.5	165
180						5.9	5.6	4.6	180
200							4.4	3.6	200
230								2.4	230







with 33,100 lbs carbody counterweight

ft	125						ft
	56	74	94	113	133	151	
39.6	45.4						39.6
45	43.8	36.8					45
55	36.5	34.5	29.5				55
60	32.7	32.4	28.7	24.4			60
65	29.6	29.4	27.8	23.8	19.7		65
70	27	26.8	25.2	23.2	19	16.8	70
75	22.3	24.6	24.1	22.6	18.4	16.3	75
90		19.5	19.2	18.9	16.9	15.2	90
110			14.7	14.4	14	13.7	110
130				11.4	11	10.7	130
150					8.7	8.5	150
165						7.2	165

ft	135			ft
	74	84	94	
46.2	32.9			46.2
50	32.3	29.5		50
55	31.1	28.8	25.8	55
60	30.1	27.8	24.7	60
70	25.9	24.4	22.8	70
75	24.3	23.4	21.8	75
80	22.5	22.3	21.1	80
85	20.8	20.6	20.5	85
90	19.3	19.1	19	90
95	17.9	17.8	17.7	95
100		16.7	16.5	100
110			14.5	110

with 33,100 lbs carbody counterweight

**luffing jib (1309)**

 56-135 ft 75°	 56-219 ft	 16'7"	 71200 lbs	 360°	 85%
---	--	--	--	--	--

ft	56								ft
	56	74	94	113	151	171	190	219	
46.2	45.3								46.2
55	36.5	36.2							55
65	29.6	29.4	29						65
75	24.8	24.7	24.3	23.9					75
90		19.5	19.3	18.9	18.1				90
95			17.9	17.6	16.8	16.3			95
105			15.7	15.4	14.6	14.2	13.8		105
110			14.7	14.5	13.7	13.3	12.9		110
120				12.8	12.1	11.7	11.3	10.6	120
130				11.4	10.7	10.3	9.9	9.3	130
140					9.6	9.2	8.8	8.1	140
165					7.2	6.9	6.5	5.9	165
185						5.5	5.2	4.5	185
200							4.3	3.7	200
230								2.3	230

ft	75								ft
	56	74	94	113	151	171	190	219	
51.3	38.4								51.3
60	31.7	31.3							60
70	26.2	25.9	25.5						70
75	24	23.8	23.3						75
80		21.9	21.5	21.1					80
95		17.5	17.2	16.9	16				95
100			16.1	15.7	14.9	14.4			100
110			14.1	13.8	13	12.6	12.2		110
115			13.3	13	12.2	11.8	11.3		115
125				11.5	10.8	10.3	9.9	8.8	125
130				10.9	10.1	9.7	9.3	8.3	130
170					6.4	6.1	5.7	4.9	170
190						4.8	4.5	3.7	190
205							3.7	3	205
230								2	230

with 33,100 lbs carbody counterweight

ft	95								ft
	56	74	94	113	151	171	190	219	
56.4	32.8								56.4
65	27.5	27.1							65
75	23	22.7	22.3						75
85	19.6	19.4	19	18.6					85
100		15.7	15.3	14.9	14				100
110			13.5	13.1	12.2	11.7			110
115			12.6	12.3	11.5	11	10.2		115
120			11.9	11.6	10.8	10.3	9.6		120
130				10.3	9.5	9	8.4	7.1	130
140				9.2	8.4	8	7.4	6.2	140
175					5.6	5.2	4.9	3.7	175
195						4.1	3.7	2.7	195
200							3.5	2.5	200
210							3	2.1	210

ft	115								ft
	56	74	94	113	151	171	190	219	
61.5	28.2								61.5
70	24	23.6							70
80	20.3	20	19.5						80
85	18.8	18.5	18						85
90		17.2	16.7	16.3					90
105		14	13.6	13.2	12.1				105
115			12	11.6	10.7	9.8			115
120			11.3	10.9	10	9.2	8.4		120
125			10.6	10.3	9.4	8.6	7.8		125
140				8.6	7.8	7.2	6.4	5.1	140
180					4.9	4.5	3.8	2.6	180
190						3.9	3.3	2.2	190
200						3.4	2.9		200
215							2.4		215

with 33,100 lbs carbody counterweight







ft	125						ft
	56	74	94	113	133	151	
64.1	26.1						64.1
75	21.5	21.1					75
85	18.3	18	17.5				85
90	16.9	16.7	16.2	15.8			90
100		14.5	14.1	13.7	13.1		100
105		13.6	13.2	12.8	12.3	11.4	105
110		12.7	12.3	12	11.5	10.7	110
130			9.7	9.3	8.9	8.4	130
145				7.8	7.4	7	145
165					5.9	5.5	165
170						5.2	170
180						4.6	180

ft	135			ft
	74	84	94	
74.5	20.6			74.5
75	20.4			75
80	18.8	18.5		80
85	17.4	17.1	16.9	85
90	16.2	15.9	15.7	90
95	15.1	14.8	14.6	95
100	14.1	13.8	13.6	100
105	13.1	12.9	12.7	105
110	12.3	12.1	11.9	110
120		10.7	10.5	120
125			9.9	125
130			9.3	130

with 33,100 lbs carbody counterweight

### LIEBHERR LR 1100

#### luffing jib (1309)

					
56-135 ft 65°	56-219 ft	16'7"	71200 lbs	360°	85%

ft	56								ft
	56	74	94	113	151	171	190	219	
63.9	28.4								63.9
75	23.3	22.9							75
85	19.8	19.6							85
90		18.2	17.8						90
100		15.8	15.5	15.1					100
120			12	11.7	10.9				120
130				10.4	9.7	9.2			130
135				9.9	9.1	8.6			135
145					8.1	7.7	7.2		145
160					6.8	6.4	6	5.2	160
175					5.7	5.4	5	4.2	175
180						5	4.7	4	180
195						4.2	3.8	3.2	195
200							3.6	2.9	200
210							3.1	2.5	210
220								2.1	220

ft	75								ft
	56	74	94	113	151	171	190	219	
72.2	22.8								72.2
85	18.6	18.2							85
90	17.2	16.9							90
95		15.8	15.3						95
105		13.8	13.4	12.9					105
110		12.9	12.6	12.2					110
125			10.4	10.1					125
130				9.5	8.7				130
140				8.5	7.7	7.2			140
145				8	7.2	6.7			145
150					6.8	6.3	5.8		150
170					5.4	4.9	4.5	3.4	170
180					4.7	4.3	3.9	2.8	180
195						3.5	3.2	2.1	195
200						3.3	2.9		200
220							2.1		220

with 33,100 lbs carbody counterweight

ft	95							ft
	56	74	94	113	151	171	190	
80.5	18.3							80.5
95	14.8	14.4						95
100	13.7	13.5						100
105		12.6	12.1					105
115		11.1	10.7	10.2				115
140				7.5	6.6			140
150				6.7	5.8	5.2		150
155				6.3	5.5	4.9		155
160					5.2	4.6	3.8	160
190					3.5	3	2.4	190
195						2.8	2.2	195
200						2.6		200
210						2.2		210

ft	115							ft
	56	74	94	113	151	171	190	
88.8	14.7							88.8
100	12.6	12.1						100
105	11.7	11.4						105
115		10	9.5					115
125		8.8	8.4	7.9				125
145			6.6	6.2	5			145
155				5.5	4.4	3.5		155
160				5.1	4.1	3.3		160
170					3.6	2.8	2	170
180					3.1	2.3		180
185					2.9	2.1		185
190					2.7			190
200					2.3			200







with 33,100 lbs carbody counterweight

ft	125						ft
	56	74	94	113	133	151	
93	13.1						93
105	11.1	10.7					105
110	10.4	10					110
115		9.4	8.8				115
130		7.7	7.3	6.9			130
140			6.5	6	5.3		140
150			5.7	5.3	4.7	3.9	150
165				4.4	3.9	3.1	165
185					2.9	2.3	185
190						2.1	190

ft	135			ft
	74	84	94	
107.9	9.5			107.9
110	9.3			110
115	8.7	8.4		115
120	8.2	7.9	7.6	120
125	7.7	7.4	7.1	125
130	7.2	6.9	6.7	130
135		6.5	6.3	135
140		6.1	5.9	140
145			5.5	145
150			5.2	150

with 33,100 lbs carbody counterweight

**luffing jib (1309)**

 56-115 ft 45°	 56-190 ft	 16'7"	 71200 lbs	 360°	 85%
---	--	--	--	--	--

ft	56							ft
	56	74	94	113	151	171	190	
93.2	15.4							93.2
100	14							100
110		12						110
115		11.3						115
125			9.6					125
135			8.5					135
140				7.7				140
150				6.9				150
175					4.4			175
180					4.1			180
190					3.6	3.2		190
195						2.9		195
200						2.7		200
205						2.5	2.1	205

ft	75					ft
	56	74	94	113	151	
107.1	11					107.1
110	10.6					110
125		8.5				125
130		8				130
140			6.7			140
145			6.3			145
150			5.9			150
155				5.2		155
160				4.9		160
165				4.6		165
170				4.3		170
190					2.5	190
195					2.3	195
200					2.1	200

with 33,100 lbs carbody counterweight

ft	95			ft	
	56	74	94		
121	7.5			121	
125	7.2			125	
140		5.6		140	
145		5.2		145	
155			4.2	155	
160			3.9	160	
170				3	170
180				2.5	180

ft	115		ft	
	56	74		
134.9	4.8		134.9	
135	4.8		135	
140	4.5		140	
155		3.3	155	
160		3	160	
170			21	170

with 33,100 lbs carbody counterweight