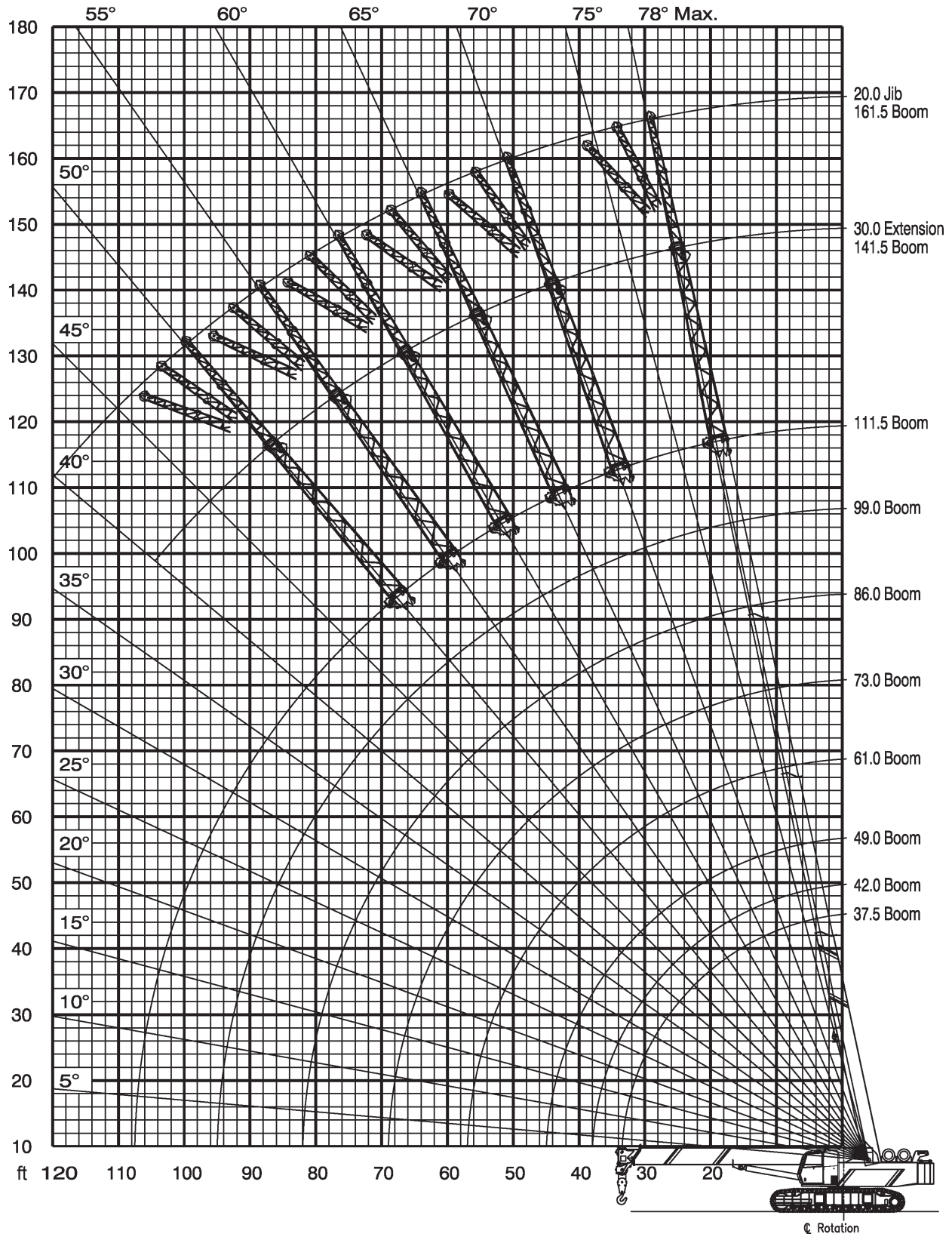




Load Blocks	Capacity	Sheaves	Weight
	222.2 tons	22	2,222 lbs
	22.2 tons	2	2,222 lbs
	2.2 tons	2	2,222 lbs
	222.2 tons	-	2,222 lbs



Mantis 14010





	37.5**	37.5	42	49	61	73	86	99	111.5	
10	140	120	90	86	79*					10
12	124.6	100	88	84	72.6*					12
15	98.3	90	83	78	71.5	48	44*			15
20	72	72	71.7	71.3	66.5	43	40	38.1*		20
25		51	50.5	49.9	49.2	41	39	36	35*	25
30		37.8	37.4	36.9	36.3	37.3	34.5	31.5	30.8	30
35			29.2	28.7	28.1	29.1	29.8	27	26.3	35
40				23	22.5	23.4	24.1	24	21.7	40
45				20.9	18.3	19.2	19.9	20.4	19	45
50					15.2	16	16.7	17.1	16.9	50
55					13	13.9	14.1	14.2	14.3	55
60						11.9	12	12.1	12.2	60
65						9.8	9.9	10	10.1	65
70							8.1	8.2	8.4	70
75							7.3	7.4	7.5	75
80							6.6	6.7	6.9	80
85								6.3	6.4	85
90								5.6	5.7	90
95								4.9	5.2	95
100									4.6	100
105									4	105

* Capacity based on maximum obtainable boom angle

** no travel



 Ft	37.5	42	49	61	73	86	99	111.5	 Ft
10	120	90	86	79*					10
12	100	88	84	72.6*					12
15	90	83	78	71.5	48	44*			15
20	56.2	55.6	55	54.2	43	40	38.1*		20
25	37.8	37.3	36.8	36.1	37.2	38.1	36	35*	25
30	27.5	27.2	26.7	26	26.7	27.4	28.3	28.9	30
35		20.8	20.4	19.8	20.7	21.3	21.5	22	35
40			15.5	13.8	14.4	15	15.6	16.2	40
45			14.8	12.2	13.1	13.7	14.3	14.5	45
50				9.8	10.7	11.3	11.8	12.2	50
55				7.9	8.7	9.4	9.9	10.2	55
60					7.2	7.8	8.3	8.6	60
65					5.9	6.5	7	7.3	65
70						5.4	5.9	6.2	70
75						4.5	5	5.3	75
80						3.7	4.1	4.5	80
85							3.5	3.8	85
90							2.8	3.2	90
95							2.3	2.6	95
100								2.1	100
105								1.7	105

* Capacity based on maximum obtainable boom angle



37.5-111.5 ft
nose sheave



15'8"



30,000 lbs





360°

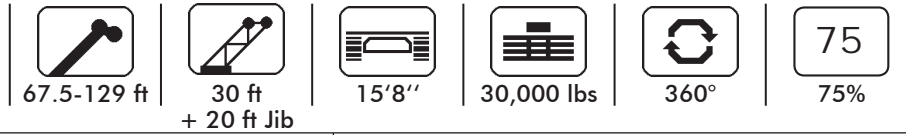




75

75%

 ft	37.5	42	49	61	73	86	99	111.5	 ft
10	11	11	11	11*					10
12	11	11	11	11*					12
15	11	11	11	11	11	11*			15
20	11	11	11	11	11	11	11*		20
25	11	11	11	11	11	11	11	11*	25
30	11	11	11	11	11	11	11	11	30
35		11	11	11	11	11	11	11	35
40			11	11	11	11	11	11	40
45			11	11	11	11	11	11	45
50				11	11	11	11	11	50
55				11	11	11	11	11	55
60					11	11	11	11	60
65					9.8	9.9	10	10.1	65
70						8.1	8.2	8.4	70
75						7.3	7.4	7.5	75
80						6.6	6.7	6.9	80
85							6.3	6.4	85
90							5.6	5.7	90
95							4.9	5.2	95
100								4.6	100
105								4	105

* Capacity based on maximum obtainable boom angle



	30		0°	30 + 20			
	67.5-129	>129		15°	30°		
78°	18	18	6.6	4	2.2	78°	
75°	13.6	13.6	6.3	4	2.1	75°	
72°	11.5	11.5	5.6	3.5	2	72°	
70°	10.1	10.1	5.1	3.2	1.9	70°	
68°	8.9	8.9	4.6	3	1.8	68°	
65°	8	8	4.2	2.8	1.8	65°	
62°	7.2	7.2	3.9	2.6	1.7	62°	
60°	6.7	6.7	3.5	2.4	1.7	60°	
58°	6.1	6.1	3.2	1.9	1.4	58°	
55°	5.8	5.8	2.6	1.3	1	55°	
52°	5.3	5.3	2	0.6	0.4	52°	
50°	5.1	5.1	1.5	0.3	0.2	50°	
48°	4.9	4.6				48°	
45°	4.6	4				45°	

