

BAY CRANE

www.baycrane.com

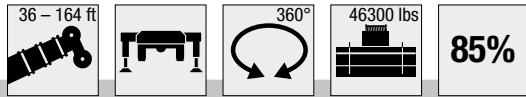
LIEBHERR LTM 1090-4.1 – 110 Ton HYDRAULIC CRANE



New York City
11-02 43rd Avenue
Long Island City, NY 11101
Tel: 718 392 0800
Fax: 718 349 6681
info@baycrane.com

Long Island
389 New South Road
Hicksville, NY 11801
Tel: 516 937 1523
Fax: 516 937 3672
info@baycrane.com

Lifting capacities on telescopic boom

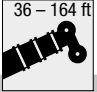


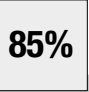


ft	ft												ft	
	36 ft	48 ft	60 ft	72 ft	83 ft	95 ft	107 ft	119 ft	130 ft	142 ft	154 ft	164 ft		
9	*	150	140	140										9
10	212	150	140	139	118									10
12	146	145	137	131	118	96								12
14	134	132	126	121	115	96	82.5							14
16	124	120	117	112	108	96	81.5	61.5						16
18	116	110	109	105	101	94	79.5	61.5	54.6					18
20	108	101	102	98	94.5	91	77.5	61.5	54.5	42.9				20
23	96	88.5	90	89	85.5	82.5	74.5	61.5	53.6	42.9				23
26	83	77.5	79	79	78	75	71.5	58.5	51.5	42.4	34			26
29	63.5	63	70	70.5	68	66.5	63	54.7	48.8	41.2	33.5	25.1		29
32			62	62.5	60.5	59	55.9	50.9	45.9	39.5	32.7	25.1	21.8	32
35			55.5	55.7	54.8	52.7	50	47	43.2	37.6	31.5	25.1	21.8	35
38			50.2	50.8	49.6	47.5	45	43	40.7	35.8	30.3	24.8	21.5	38
44				42.1	41.3	39.5	37.4	36.4	34.5	32.4	27.8	23.4	20.6	44
50				34.8	34.8	33.4	31.8	31.6	29.8	28.5	25.6	21.9	19.4	50
56					29.5	28.7	28.2	27.5	26	24.6	23.6	20.5	18.1	56
62						24.8	25.3	24	22.7	21.7	21.3	19.1	16.9	62
68						21.4	22.1	21.1	20.4	19.6	18.7	17.8	15.8	68
74							19.3	18.7	18.7	17.6	16.6	16.5	14.8	74
80							17.1	16.8	16.6	15.7	15.2	15	13.9	80
86								15.2	14.7	14.5	14.1	13.4	13	86
92								13.9	13.1	12.9	12.7	11.8	11.7	92
98								12.5	12	11.6	11.2	10.5	10.4	98
104									11.1	10.4	10	9.2	9.2	104
110									10.1	9.4	8.9	8.3	8.2	110
116										8.5	8.1	7.4	7.3	116
122											7.3	6.6	6.5	122
128											6.7	5.9	5.8	128
134												5.3	5.2	134
140												4.7	4.7	140
146													4.2	146

* over rear

TAB 150315 / 150301

Lifting capacities on telescopic boom

	   													
ft	36 ft	48 ft	60 ft	72 ft	83 ft	95 ft	107 ft	119 ft	130 ft	142 ft	154 ft	164 ft	ft	
9	150	140	140										9	
10	150	140	139	118									10	
12	145	137	131	118	96								12	
14	131	126	121	115	96	82.5							14	
16	119	117	112	108	96	81.5	61.5						16	
18	109	109	105	101	94	79.5	61.5	54.6					18	
20	99.5	101	98	94	91	77.5	61.5	54.5	42.9				20	
23	85.5	87	87.5	83.5	80	74.5	61.5	53.6	42.9				23	
26	75	76	74.5	71	69	65	58.5	51.5	42.4	34			26	
29	62.5	67	64.5	63	60.5	57	53.6	48.8	41.2	33.5	25.1		29	
32		58.7	57.6	55.8	53.2	50.3	48.2	45.4	39.5	32.7	25.1	21.8	32	
35		52.1	51.5	49.7	47.4	44.9	43.4	41.1	37.6	31.5	25.1	21.8	35	
38		46.2	46.2	44.6	42.6	40.5	39.6	37	35.6	30.3	24.8	21.5	38	
44			37.8	37	35.4	34.4	33.5	31.5	30.2	27.8	23.4	20.6	44	
50			31.2	31.1	29.8	29.7	28.5	26.9	26	24.9	21.9	19.4	50	
56				26.3	25.5	25.8	24.4	23.7	22.8	21.7	20.5	18.1	56	
62					22	22.4	21.4	21.2	20	19.2	18.7	16.9	62	
68					19	19.5	19.3	18.6	17.8	17.5	16.6	15.7	68	
74						16.9	17.3	16.3	16.1	15.6	14.6	14.3	74	
80						14.9	15.2	14.5	14.3	13.8	12.8	12.6	80	
86							13.3	13.2	12.5	12.1	11.3	11.1	86	
92							11.9	11.7	11	10.6	9.7	9.6	92	
98							10.7	10.4	9.7	9.3	8.6	8.5	98	
104								9.3	8.7	8.3	7.6	7.5	104	
110								8.5	7.8	7.4	6.7	6.6	110	
116									7.1	6.6	5.9	5.9	116	
122										5.9	5.3	5.2	122	
128										5.3	4.6	4.6	128	
134											4	4	134	
140											3.4	3.5	140	
146												2.9	146	

TAB 150303

Lifting capacities on telescopic boom

	36 - 164 ft		360°		34200 lbs		85%													
	36 - 164 ft																			
	36 ft	48 ft	60 ft	72 ft	83 ft	95 ft	107 ft	119 ft	130 ft	142 ft	154 ft	164 ft								
ft	ft	ft	ft	ft	ft	ft	ft	ft	ft	ft	ft	ft	ft							
9	150	140	140										9							
10	150	140	139	118									10							
12	145	137	131	118	96								12							
14	131	126	121	115	96	82.5							14							
16	119	117	112	108	96	81.5	61.5						16							
18	109	109	105	101	94	79.5	61.5	54.6					18							
20	98.5	100	97.5	94	90.5	77.5	61.5	54.5	42.9				20							
23	84.5	86	85	80	77.5	73	61.5	53.6	42.9				23							
26	73.5	75	72	70	66.5	62.5	58.5	51.5	42.4	34			26							
29	62	64.5	63	61	57.9	54.7	51.8	48.8	41.2	33.5	25.1		29							
32		56.6	55.7	53.6	51.1	48.2	46.4	44	39.5	32.7	25.1	21.8	32							
35		50.2	49.5	47.7	45.5	43.3	41.8	39.3	37.6	31.5	25.1	21.8	35							
38		44.3	44.3	42.8	40.9	39	38.3	36.1	34.7	30.3	24.8	21.5	38							
44			36.3	35.5	33.8	33.4	32.2	30.4	28.9	27.8	23.4	20.6	44							
50			29.9	29.8	28.5	28.7	27.2	26.3	25.1	24.2	21.9	19.4	50							
56				25.2	24.4	24.6	23.6	23.1	21.9	21.1	20.2	18.1	56							
62					21	21.3	21	20.1	19.2	18.8	18	16.9	62							
68					18	18.4	18.7	17.6	17.3	16.7	15.6	15.4	68							
74						16.1	16.4	15.6	15.3	14.6	13.6	13.4	74							
80						14.5	14.3	14.2	13.5	12.9	12	11.8	80							
86							12.6	12.4	11.7	11.3	10.5	10.3	86							
92							11.2	10.9	10.3	9.8	9	9	92							
98							10	9.7	9	8.6	7.9	7.8	98							
104								8.7	8.1	7.7	7	6.9	104							
110								7.9	7.2	6.8	6.1	6.1	110							
116									6.5	6.1	5.4	5.3	116							
122										5.4	4.7	4.7	122							
128										4.8	4.1	4.1	128							
134											3.5	3.5	134							
140											3	3	140							
146												2.5	146							

TAB 150304

Lifting capacities on telescopic boom

		36 - 60 ft		46300 lbs		85%	
ft		36 ft	48 ft	60 ft	ft		
9		51.9	53.2	54	9		
10		51.4	52.7	53.5	10		
12		45.2	46.6	47.4	12		
14		40.1	41.5	42.4	14		
16		35.8	37.2	38.1	16		
18		32.2	33.8	34.6	18		
20		29	30.5	31.4	20		
23		25	26.6	27.5	23		
26		21.7	23.4	24.3	26		
29		19	20.7	21.6	29		
32			18.4	19.3	32		
35			16.4	17.3	35		
38			14.4	15.6	38		
44				12.3	44		
50				9.6	50		

0° = over rear
tyre size: 16.00 R 25

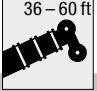

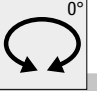
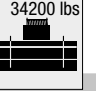
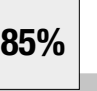


TAB 150137

		36 - 60 ft		37500 lbs		85%	
ft		36 ft	48 ft	60 ft	ft		
9		51.2	52.5	53.3	9		
10		50.7	52	52.8	10		
12		44.6	46	46.8	12		
14		39.5	40.9	41.8	14		
16		35.2	36.7	37.6	16		
18		31.7	33.3	34.1	18		
20		28.5	30.1	30.9	20		
23		24.6	26.2	27.1	23		
26		20.2	22.6	23.9	26		
29		16.6	19	20.3	29		
32			16	17.4	32		
35			13.6	14.9	35		
38			11.6	12.9	38		
44				9.8	44		
50				7.4	50		

0° = over rear
tyre size: 16.00 R 25

TAB 150139

Lifting capacities on telescopic boom

		    			
 ft		36 ft	48 ft	60 ft	 ft
9		50.9	52.2	53	9
10		50.4	51.7	52.5	10
12		44.3	45.7	46.5	12
14		39.2	40.7	41.5	14
16		35	36.5	37.3	16
18		31.5	33	33.9	18
20		28.2	29.8	30.7	20
23		23.1	25.5	26.9	23
26		18.6	21.1	22.4	26
29		15.2	17.6	18.9	29
32			14.8	16.1	32
35			12.5	13.8	35
38			10.6	11.8	38
44				8.9	44
50				6.6	50

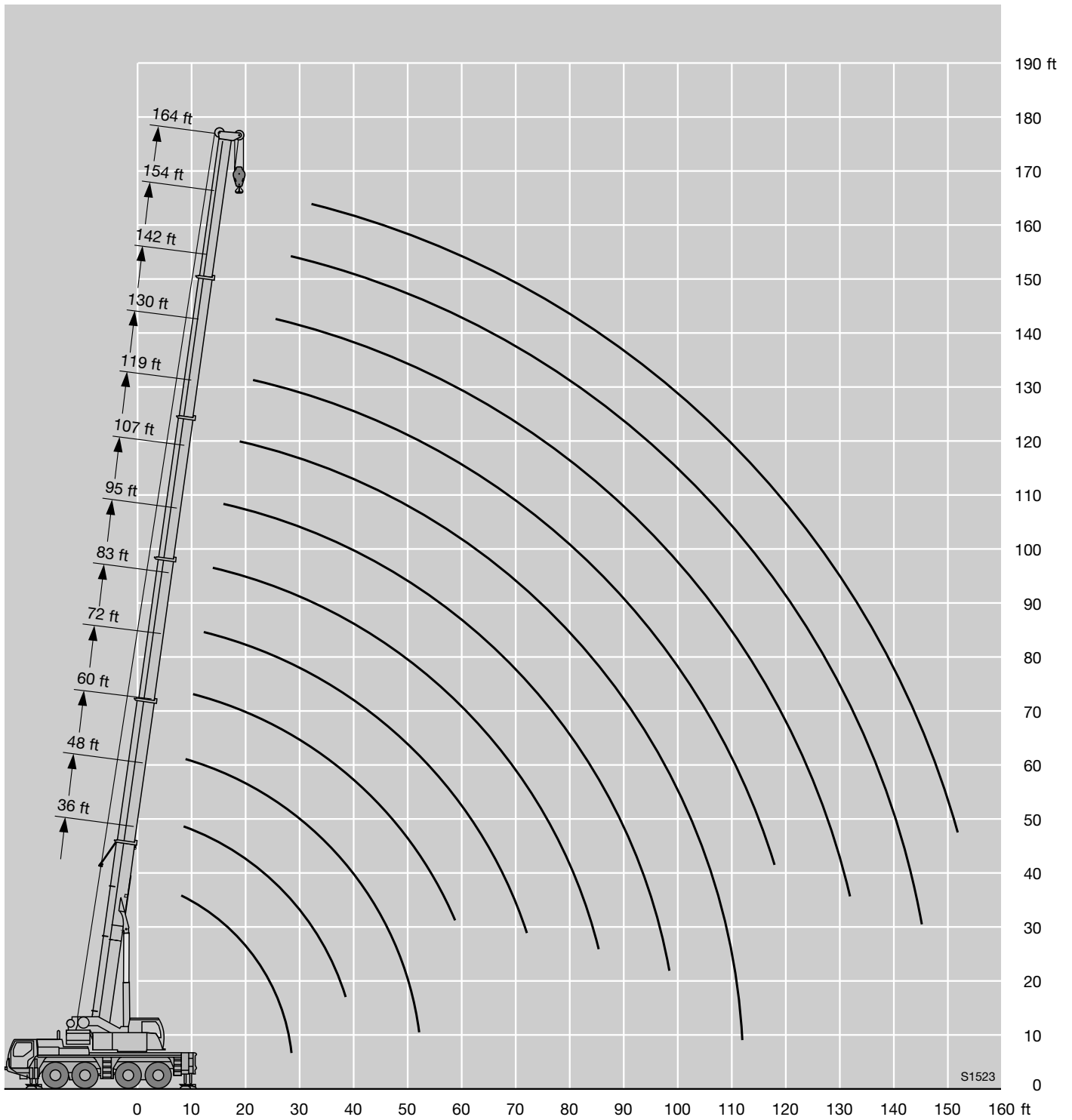
0° = over rear
tyre size: 16.00 R 25

TAB 150114

Remarks referring to load charts

1. The tabulated lifting capacities do not exceed 85% of the tipping load.
2. The crane's structural steelwork is in accordance with DIN 15018, part 3. Design and construction of the crane comply with DIN 15018, part 2, and with F. E. M. regulations.
3. The 85% overturning limit values take into account wind force 5 = wind speed 20 mph.
4. Lifting capacities are given in kips.
5. The weight of the hook blocks and hooks must be deducted from the lifting capacities.
6. Working radii are measured from the slewing centreline.
7. The lifting capacities given for the telescopic boom only apply if the folding jib is taken off.
8. Subject to modification of lifting capacities.
9. Lifting capacities above 139 kips / 176.3 kips only with additional pulley block / special equipment.

Lifting heights



Lifting capacities on the hydraulically variable folding jib



ft	36 ft			83 ft			95 ft			107 ft			119 ft			130 ft			142 ft			154 ft			164 ft			ft		
	34 ft			34 ft			34 ft			34 ft			34 ft			34 ft			34 ft			34 ft								
	0°	20°	40°	0°	20°	40°	0°	20°	40°	0°	20°	40°	0°	20°	40°	0°	20°	40°	0°	20°	40°	0°	20°	40°	0°	20°	40°			
12	25.1																										12			
14	25.1	22.3		25.1																								14		
17	25.1	22.3		25.1			25.1																					17		
20	25.1	21.9		25.1			25.1			25.1																		20		
23	25.1	20.8	16.5	25.1			25.1			25.1																		23		
26	23.9	19.7	16.4	25.1			25.1			25.1			23.8															26		
29	22.3	18.8	15.9	25.1	22.3		25.1			25.1			23.8			20.4												29		
32	20.6	17.9	15.4	25.1	21.8		25.1	21.6		25.1			23.8			20.4			17									32		
35	19.1	17.2	15	25.1	21.1	16.4	25.1	21.2		25.1	20.6			23.5			20.3											35		
38	17.7	16.4	14.7	25.1	20.4	16.2	25.1	20.6	16.1	25.1	20.3			23.2	19.4			20.2						12.5		10.7		38		
44	15.4	14.9	14	24.7	19.2	15.7	24.8	19.5	15.7	24.1	19.3	15.5	22.3	18.8	15	19.8	17.5		16.9	16			12.6			10.7		44		
50	13.4	13.4	13.1	23.1	18.2	15.2	23.6	18.5	15.2	22.9	18.4	15.2	21.4	18	14.9	19.3	17.1	14.3	16.4	15.5	13.8	12.5	11.6			10.7	10.2		50	
56	11.8	12.3	12.1	21	17.3	14.8	22	17.7	14.8	21.8	17.7	14.8	20.6	17.3	14.6	18.6	16.6	14.2	15.7	14.6	13.6	12.2	11.4	10.4	10.5	10	9.5		56	
62				19.2	16.4	14.4	20.4	16.9	14.5	20.5	17	14.5	19.6	16.7	14.3	17.6	16.1	14	14.7	13.7	12.9	11.7	10.9	10.2	10.1	9.7	9.3		62	
68				17.5	15.5	14	18.8	16.1	14.2	18.9	16.3	14.2	17.9	16.2	14.1	16.4	15.4	13.8	13.8	12.9	12.2	11	10.3	9.8	9.6	9.3	9		68	
74				16.1	14.6	13.6	17.3	15.3	13.9	16.9	15.5	13.9	15.7	15.6	13.8	15.1	14.6	13.5	13	12.1	11.6	10.4	9.8	9.4	9.2	8.8	8.7		74	
80				14.8	13.7	13	15.8	14.4	13.5	15	14.8	13.6	14	14.7	13.6	13.5	13.7	13.1	12.2	11.4	11	9.9	9.3	9	8.7	8.4	8.3		80	
86				13.6	12.9	12.5	14.3	13.7	13	13.4	13.9	13.2	12.9	13	13.2	11.9	12.8	12.6	11.4	10.8	10.4	9.3	8.9	8.7	8.3	8	8		86	
92				12.6	12.3	12.1	12.8	13	12.5	11.9	12.5	12.7	11.6	11.8	12.1	10.6	11.3	11.9	10.5	10.2	9.9	8.8	8.5	8.4	7.9	7.7	7.7		92	
98				11.8	11.8	11.8	11.2	11.7	11.9	10.6	11.1	11.5	10.4	10.9	11	9.8	10	10.6	9.3	9.7	9.5	8.3	8.1	8.1	7.5	7.3	7.3		98	
104				10.8	10.9		10	10.3	10.5	9.4	9.8	10.1	9.2	9.7	10	9.1	9	9.4	8.3	8.9	9	8	7.8	7.7	7.2	7.1	7		104	
110							9	9.2		8.4	8.7	8.9	8.2	8.6	8.9	8.2	8.5	8.6	7.6	7.9	8.3	7.5	7.4	7.4	6.9	6.8	6.8		110	
116							8.1	8.3		7.5	7.8	7.9	7.3	7.7	7.9	7.3	7.7	7.9	7.1	7.1	7.4	6.8	7.1	7.1	6.5	6.5	6.5		116	
122										6.7	6.9		6.5	6.8	7	6.6	6.9	7.1	6.6	6.7	6.8	6	6.5	6.7	5.8	6.1	6.3		122	
128										5.9	6.1		6	6.1		6.2	6.3	6.4	6	6.3	6.4	5.3	5.7	6	5.2	5.6	5.8		128	
134													5.7	5.7		5.8	5.9	5.9	5.4	5.6	5.9	4.7	5	5.3	4.5	4.9	5.2		134	
140													5.5	5.6		5.2	5.4		4.8	5	5.2	4.1	4.4	4.6	4	4.3	4.5		140	
146																4.7	4.8		4.3	4.5	4.6	3.6	3.9	4	3.4	3.8	4		146	
152																4.2			3.7	3.9		3	3.3	3.5	3	3.2	3.4		152	
158																			3.2	3.4		2.5	2.8		2.5	2.7	2.9		158	
164																			2.8	2.9		2.1	2.3		2	2.2	2.3		164	
170																						1.7	1.8		1.6	1.8			170	
176																							1.4							176

TAB 150351 / 150361 / 150371

Lifting capacities on the hydraulically variable folding jib



ft	36 ft			95 ft			107 ft			119 ft			130 ft			142 ft			154 ft			164 ft			ft
	62 ft			62 ft			62 ft			62 ft			62 ft			62 ft			62 ft						
	0°	20°	40°	0°	20°	40°	0°	20°	40°	0°	20°	40°	0°	20°	40°	0°	20°	40°	0°	20°	40°	0°	20°	40°	
12	9																							12	
14	9																							14	
17	9																							17	
20	9																							20	
23	9																							23	
26	8.8			9																				26	
29	8.6	7.3		9			8.5																	29	
32	8.4	7.3		9			8.5																	32	
35	8.1	7.3		9			8.5			8.3														35	
38	7.9	7.2		9			8.5			8.3			8.3											38	
44	7.5	6.9		8.9	7.3		8.5			8.3			8.3		7.8									44	
50	7	6.5	5.8	8.6	7.3		8.3	7		8.1	7		8.2		7.8		6.8				6.1			50	
56	6.4	6.2	5.7	8.3	7.2		8.1	7		8	6.9		8.1	7	7.7	6.8	6.8				6.1			56	
62	5.9	5.9	5.6	8	6.9	5.8	7.9	6.9	5.8	7.8	6.8		8	6.9	7.7	6.8	6.8	6.3			6.1	5.8		62	
68	5.4	5.6	5.4	7.7	6.7	5.8	7.6	6.7	5.8	7.6	6.6	5.6	7.8	6.7	5.6	6.7	6.8	6.3			6.1	5.8		68	
74	5	5.2	5.3	7.5	6.5	5.7	7.4	6.5	5.7	7.4	6.5	5.6	7.5	6.6	5.6	6.5	5.6	6.8	6.2	5.3	6.1	5.8		74	
80	4.6	4.8	5	7.2	6.3	5.6	7.1	6.3	5.6	7.2	6.3	5.6	7.3	6.4	5.6	7.2	6.3	5.6	6.7	6	5.3	6.1	5.8	5.1	80
86				6.8	6.1	5.6	6.8	6.1	5.5	6.9	6.1	5.5	7.2	6.2	5.6	7	6.2	5.5	6.6	5.9	5.3	6	5.7	5.1	86
92				6.5	6	5.5	6.6	6	5.4	6.6	6	5.4	7	6.1	5.5	6.9	6	5.4	6.5	5.8	5.3	5.9	5.6	5.1	92
98				6.1	5.8	5.4	6.2	5.8	5.4	6.4	5.8	5.4	6.8	6	5.4	6.7	5.9	5.3	6.3	5.7	5.2	5.8	5.5	5.1	98
104				5.7	5.5	5.3	5.9	5.7	5.3	6.1	5.7	5.3	6.6	5.8	5.3	6.6	5.8	5.3	6.2	5.6	5.2	5.7	5.4	5.1	104
110				5.4	5.3	5.2	5.6	5.4	5.3	5.8	5.5	5.3	6.4	5.7	5.3	6.4	5.7	5.3	6	5.5	5.1	5.5	5.2	5.1	110
116				5.2	5	5	5.3	5.2	5.2	5.5	5.3	5.2	6.3	5.6	5.3	6.2	5.6	5.2	5.8	5.4	5.1	5.3	5.1	5	116
122				4.9	4.8	4.9	5	5	5	5.3	5.1	5.1	6.1	5.5	5.2	6.1	5.5	5.2	5.6	5.3	5.1	5.1	4.9	4.9	122
128				4.7	4.6	4.7	4.7	4.7	4.8	5	4.9	4.9	5.9	5.4	5.2	5.6	5.4	5.2	5.4	5.1	5	4.9	4.8	4.7	128
134				4.5	4.4	4.5	4.5	4.5	4.6	4.8	4.7	4.8	5.6	5.4	5.2	5.1	5.3	5.2	5	5	4.9	4.6	4.6	4.6	134
140				4.3	4.3		4.2	4.3	4.4	4.5	4.5	4.6	5.1	5.3	5.2	4.9	5.1	4.5	4.8	4.8	4.3	4.5	4.5	140	
146							4	4.1	4.2	4.3	4.3	4.5	4.7	5.1	5.2	4.6	4.6	5	4	4.6	4.7	3.7	4.3	4.4	146
152							3.8	3.9		4.1	4.2	4.3	4.3	4.6	4.8	4.2	4.5	4.5	3.5	4.1	4.5	3.3	3.9	4.2	152
158										4	4		4.1	4.2	4.3	3.8	4.2	4.4	3.1	3.6	4	2.8	3.4	3.9	158
164										3.8	3.8		3.8	4	4.2	3.3	3.7	3.9	2.6	3.1	3.5	2.4	3	3.4	164
170										3.7	3.8		3.4	3.6	3.6	2.9	3.3	3.4	2.2	2.7	3	2	2.5	2.9	170
176													3	3.1		2.5	2.8	2.9	1.8	2.3	2.5	1.7	2.1	2.4	176
182													2.6			2.1	2.4		1.5	1.8	2		1.7	2	182
188																1.8	1.9			1.4	1.5			1.5	188
194																1.5									194

TAB 150351 / 150361 / 150371

Lifting capacities on the hydraulically variable folding jib



ft	36 ft			83 ft			95 ft			107 ft			119 ft			130 ft			142 ft			154 ft			164 ft			ft	
	34 ft			34 ft			34 ft			34 ft			34 ft			34 ft			34 ft			34 ft							
	0°	20°	40°	0°	20°	40°	0°	20°	40°	0°	20°	40°	0°	20°	40°	0°	20°	40°	0°	20°	40°	0°	20°	40°	0°	20°	40°		
12	25.1																										12		
14	25.1	22.3		25.1																								14	
17	25.1	22.3		25.1			25.1																					17	
20	25.1	21.9		25.1			25.1			25.1																		20	
23	25.1	20.8	16.5	25.1			25.1			25.1																		23	
26	23.9	19.7	16.4	25.1			25.1			25.1			23.8															26	
29	22.3	18.8	15.9	25.1	22.3		25.1			25.1			23.8			20.4												29	
32	20.6	17.9	15.4	25.1	21.8		25.1	21.6		25.1			23.8			20.4			17									32	
35	19.1	17.2	15	25.1	21.1	16.4	25.1	21.2		25.1	20.6			23.5			20.3			17								35	
38	17.7	16.4	14.7	25.1	20.4	16.2	25.1	20.6	16.1	25.1	20.3			23.2	19.4			20.2		17			12.5			10.7		38	
44	15.4	14.9	14	24.7	19.2	15.7	24.8	19.5	15.7	24.1	19.3	15.5	22.3	18.8	15	19.8	17.5		16.9	16			12.6			10.7		44	
50	13.4	13.4	13.1	23.1	18.2	15.2	23.6	18.5	15.2	22.9	18.4	15.2	21.4	18	14.9	19.3	17.1	14.3	16.4	15.5	13.8	12.5	11.6			10.7	10.2		50
56	11.8	12.3	12.1	21	17.3	14.8	22	17.7	14.8	21.4	17.7	14.8	20.1	17.3	14.6	18.6	16.6	14.2	15.7	14.6	13.6	12.2	11.4	10.4	10.5	10	9.5		56
62				19.2	16.4	14.4	20	16.9	14.5	19.2	17	14.5	18.2	16.7	14.3	17.1	16.1	14	14.7	13.7	12.9	11.7	10.9	10.2	10.1	9.7	9.3		62
68				17.5	15.5	14	17.8	16.1	14.2	16.7	16.2	14.2	16.1	15.9	14.1	15.1	15.3	13.8	13.8	12.9	12.2	11	10.3	9.8	9.6	9.3	9		68
74				16.1	14.6	13.6	15.6	15.3	13.9	14.6	15.2	13.9	14.2	14.6	13.8	13.3	14.1	13.5	12.8	12.1	11.6	10.4	9.8	9.4	9.2	8.8	8.7		74
80				14.7	13.7	13	13.8	14.3	13.5	12.8	13.6	13.5	12.4	13.3	13.4	12.1	12.3	12.9	11.3	11.4	11	9.9	9.3	9	8.7	8.4	8.3		80
86				13.1	12.9	12.5	12.2	12.8	12.9	11.3	12	12.6	10.9	11.7	12.3	10.9	10.8	11.5	9.9	10.7	10.4	9.3	8.9	8.7	8.3	8	8		86
92				11.5	11.9	12.1	10.7	11.2	11.6	9.9	10.6	11.1	9.6	10.3	10.9	9.6	10.1	10	8.8	9.4	9.9	8.8	8.5	8.4	7.9	7.7	7.7		92
98				10.1	10.5	10.6	9.4	9.8	10	8.7	9.2	9.6	8.5	9.1	9.5	8.5	9	9.3	8.3	8.2	8.8	7.8	8.1	8.1	7.5	7.3	7.3		98
104				9.1	9.3		8.3	8.6	8.8	7.7	8.1	8.4	7.5	8	8.4	7.8	8	8.4	7.7	7.7	7.8	6.9	7.4	7.7	6.7	7.1	7		104
110							7.4	7.7		6.8	7.2	7.4	7	7.1	7.3	7.3	7.3	7.4	6.9	7.3	7.4	6	6.6	7	5.8	6.4	6.7		110
116							6.6	6.7		6	6.3	6.4	6.6	6.6	6.7	6.5	6.8	6.9	6.1	6.5	6.8	5.2	5.8	6.2	5	5.6	6		116
122										5.2	5.5		6.3	6.3	6.3	5.8	6.1	6.3	5.4	5.8	6.1	4.6	5	5.4	4.4	4.9	5.2		122
128										4.5	4.7		5.8	5.9		5.2	5.5	5.6	4.8	5.1	5.3	3.9	4.3	4.7	3.7	4.2	4.5		128
134													5.1	5.3		4.6	4.8	4.9	4.2	4.5	4.7	3.4	3.7	4	3.2	3.6	3.9		134
140													4.6	4.7		4	4.2		3.6	3.9	4	2.8	3.2	3.4	2.6	3	3.3		140
146																3.4	3.6		3	3.3	3.4	2.4	2.7	2.8	2.2	2.5	2.7		146
152																3					2.5	2.7							152
158																					2.1	2.2							158
164																					1.7	1.8							164

TAB 150353 / 150363 / 150373

Lifting capacities on the hydraulically variable folding jib



ft	36 ft			95 ft			107 ft			119 ft			130 ft			142 ft			154 ft			164 ft			ft	
	62 ft			62 ft			62 ft			62 ft			62 ft			62 ft			62 ft							
	0°	20°	40°	0°	20°	40°	0°	20°	40°	0°	20°	40°	0°	20°	40°	0°	20°	40°	0°	20°	40°	0°	20°	40°		
12	9																							12		
14	9																							14		
17	9																							17		
20	9																							20		
23	9																							23		
26	8.8			9																				26		
29	8.6	7.3		9			8.5																	29		
32	8.4	7.3		9			8.5																	32		
35	8.1	7.3		9			8.5			8.3														35		
38	7.9	7.2		9			8.5			8.3			8.3											38		
44	7.5	6.9		8.9	7.3		8.5			8.3			8.3			7.8								44		
50	7	6.5	5.8	8.6	7.3		8.3	7		8.1	7		8.2			7.8			6.8			6.1		50		
56	6.4	6.2	5.7	8.3	7.2		8.1	7		8	6.9		8.1	7		7.7	6.8		6.8			6.1		56		
62	5.9	5.9	5.6	8	6.9	5.8	7.9	6.9	5.8	7.8	6.8		8	6.9		7.7	6.8		6.8	6.3		6.1	5.8	62		
68	5.4	5.6	5.4	7.7	6.7	5.8	7.6	6.7	5.8	7.6	6.6	5.6	7.8	6.7	5.6	7.5	6.7		6.8	6.3		6.1	5.8	68		
74	5	5.2	5.3	7.5	6.5	5.7	7.4	6.5	5.7	7.4	6.5	5.6	7.5	6.6	5.6	7.4	6.5	5.6	6.8	6.2	5.3	6.1	5.8	74		
80	4.6	4.8	5	7.2	6.3	5.6	7.1	6.3	5.6	7.2	6.3	5.6	7.3	6.4	5.6	7.2	6.3	5.6	6.7	6	5.3	6.1	5.8	5.1	80	
86				6.8	6.1	5.6	6.8	6.1	5.5	6.9	6.1	5.5	7.2	6.2	5.6	7	6.2	5.5	6.6	5.9	5.3	6	5.7	5.1	86	
92				6.5	6	5.5	6.6	6	5.4	6.6	6	5.4	7	6.1	5.5	6.9	6	5.4	6.5	5.8	5.3	5.9	5.6	5.1	92	
98				6.1	5.8	5.4	6.2	5.8	5.4	6.4	5.8	5.4	6.8	6	5.4	6.7	5.9	5.3	6.3	5.7	5.2	5.8	5.5	5.1	98	
104				5.7	5.5	5.3	5.9	5.7	5.3	6.1	5.7	5.3	6.6	5.8	5.3	6.6	5.8	5.3	6.2	5.6	5.2	5.7	5.4	5.1	104	
110				5.4	5.3	5.2	5.6	5.4	5.3	5.8	5.5	5.3	6.4	5.7	5.3	6.2	5.7	5.3	6	5.5	5.1	5.5	5.2	5.1	110	
116				5.2	5	5	5.3	5.2	5.2	5.5	5.3	5.2	6.2	5.6	5.3	5.8	5.6	5.2	5.5	5.4	5.1	5.2	5.1	5	116	
122				4.9	4.8	4.9	5	5	5	5.3	5.1	5.1	5.7	5.5	5.2	5.5	5.5	5.2	4.9	5.3	5.1	4.7	4.9	4.9	122	
128				4.7	4.6	4.7	4.7	4.7	4.8	5	4.9	4.9	5.2	5.4	5.2	5.1	5.2	5.2	4.3	5	5	4	4.7	4.7	128	
134				4.5	4.4	4.5	4.5	4.5	4.6	4.8	4.7	4.8	4.9	5.1	5.2	4.5	4.9	5	3.7	4.5	4.9	3.5	4.3	4.6	134	
140				4.3	4.3		4.2	4.3	4.4	4.5	4.5	4.6	4.6	4.7	5	4	4.6	4.8	3.2	3.9	4.5	3	3.8	4.3	140	
146							4	4.1	4.2	4.3	4.3	4.5	4.1	4.5	4.6	3.5	4.1	4.5	2.7	3.4	3.9	2.5	3.2	3.8	146	
152							3.8	3.9			4.1	4.2	4.3	3.6	4.1	4.3	3.1	3.6	4	2.3	2.9	3.4	2.1	2.7	3.2	152
158										3.7	4		3.1	3.5	3.7	2.7	3.1	3.4	1.9	2.4	2.9		2.3	2.7	158	
164										3.3	3.5		2.7	3	3.2	2.2	2.7	2.9	1.5	2	2.4		1.9	2.2	164	
170										2.9	3		2.3	2.6	2.6	1.8	2.2	2.4		1.6	1.9			1.8	170	
176													1.9	2.1		1.5	1.8	1.9							176	
182													1.7			1.4									182	

TAB 150353 / 150363 / 150373

Lifting capacities on the hydraulically variable folding jib



ft	36 ft			83 ft			95 ft			107 ft			119 ft			130 ft			142 ft			154 ft			164 ft			ft
	34 ft			34 ft			34 ft			34 ft			34 ft			34 ft			34 ft			34 ft						
	0°	20°	40°	0°	20°	40°	0°	20°	40°	0°	20°	40°	0°	20°	40°	0°	20°	40°	0°	20°	40°	0°	20°	40°	0°	20°	40°	
12	25.1																										12	
14	25.1	22.3		25.1																							14	
17	25.1	22.3		25.1			25.1																				17	
20	25.1	21.9		25.1			25.1			25.1																	20	
23	25.1	20.8	16.5	25.1			25.1			25.1																	23	
26	23.9	19.7	16.4	25.1			25.1			25.1			23.8														26	
29	22.3	18.8	15.9	25.1	22.3		25.1			25.1			23.8		20.4												29	
32	20.6	17.9	15.4	25.1	21.8		25.1	21.6		25.1			23.8		20.4			17									32	
35	19.1	17.2	15	25.1	21.1	16.4	25.1	21.2		25.1	20.6		23.5		20.3			17									35	
38	17.7	16.4	14.7	25.1	20.4	16.2	25.1	20.6	16.1	25.1	20.3		23.2	19.4	20.2			17				12.5			10.7		38	
44	15.4	14.9	14	24.7	19.2	15.7	24.8	19.5	15.7	24.1	19.3	15.5	22.3	18.8	15	19.8	17.5	16.9	16			12.6			10.7		44	
50	13.4	13.4	13.1	23.1	18.2	15.2	23.6	18.5	15.2	22.9	18.4	15.2	21.4	18	14.9	19.3	17.1	14.3	16.4	15.5	13.8	12.5	11.6		10.7	10.2	50	
56	11.8	12.3	12.1	21	17.3	14.8	21.7	17.7	14.8	20.9	17.7	14.8	19.7	17.3	14.6	18.3	16.6	14.2	15.7	14.6	13.6	12.2	11.4	10.4	10.5	10	9.5	56
62				19.2	16.4	14.4	19.3	16.9	14.5	18.2	17	14.5	17.4	16.7	14.3	16.4	16.1	14	14.7	13.7	12.9	11.7	10.9	10.2	10.1	9.7	9.3	62
68				17.5	15.5	14	16.8	16.1	14.2	15.7	16.1	14.2	15.3	15.8	14.1	14.3	15	13.8	13.6	12.9	12.2	11	10.3	9.8	9.6	9.3	9	68
74				15.8	14.6	13.6	14.7	15.1	13.9	13.7	14.6	13.9	13.3	14.3	13.8	12.9	13.2	13.3	12.1	12.1	11.6	10.4	9.8	9.4	9.2	8.8	8.7	74
80				14	13.7	13	12.9	13.6	13.4	12	12.8	13.3	11.6	12.4	13.1	11.5	11.6	12.3	10.5	11.3	11	9.9	9.3	9	8.7	8.4	8.3	80
86				12.3	12.8	12.4	11.4	12	12.5	10.5	11.2	11.8	10.2	10.9	11.5	10.1	10.7	10.7	9.4	9.9	10.4	9.3	8.9	8.7	8.3	8	8	86
92				10.8	11.1	11.4	9.9	10.5	10.9	9.2	9.8	10.3	8.9	9.6	10.1	8.9	9.5	9.9	8.8	8.7	9.3	8.2	8.5	8.4	7.9	7.7	7.7	92
98				9.5	9.7	9.9	8.7	9.1	9.4	8.1	8.6	8.9	7.9	8.4	8.9	8.1	8.4	8.9	8	8.1	8.1	7.2	7.8	8.1	6.9	7.3	7.3	98
104				8.5	8.6		7.7	8	8.2	7.1	7.5	7.8	7.4	7.4	7.8	7.5	7.6	7.8	7.1	7.6	7.7	6.2	6.8	7.3	6	6.6	7	104
110							6.8	7.1		6.2	6.6	6.8	7	6.9	7	6.7	7.1	7.2	6.3	6.8	7.1	5.4	6	6.4	5.2	5.8	6.3	110
116							6	6.2		5.4	5.7	5.9	6.5	6.6	6.6	6	6.4	6.6	5.5	5.9	6.3	4.7	5.2	5.6	4.5	5	5.4	116
122										4.6	4.9		5.9	6.1	6.2	5.3	5.6	5.8	4.8	5.2	5.5	4	4.5	4.8	3.8	4.3	4.7	122
128										4	4.1		5.3	5.5		4.7	5	5.1	4.2	4.6	4.8	3.4	3.8	4.1	3.2	3.7	4	128
134													4.7	4.8		4.1	4.3	4.5	3.7	4	4.2	2.9	3.2	3.5	2.7	3.1	3.4	134
140													4.1	4.2		3.5	3.7		3.1	3.4	3.6	2.4	2.7	2.9	2.2	2.5	2.8	140
146																3	3.1		2.6	2.8	2.9		2.2	2.4		2	2.3	146
152																2.5			2.1	2.3								152
158																			1.7	1.8								158
164																			1.3	1.4								164

TAB 150354 / 150364 / 150374

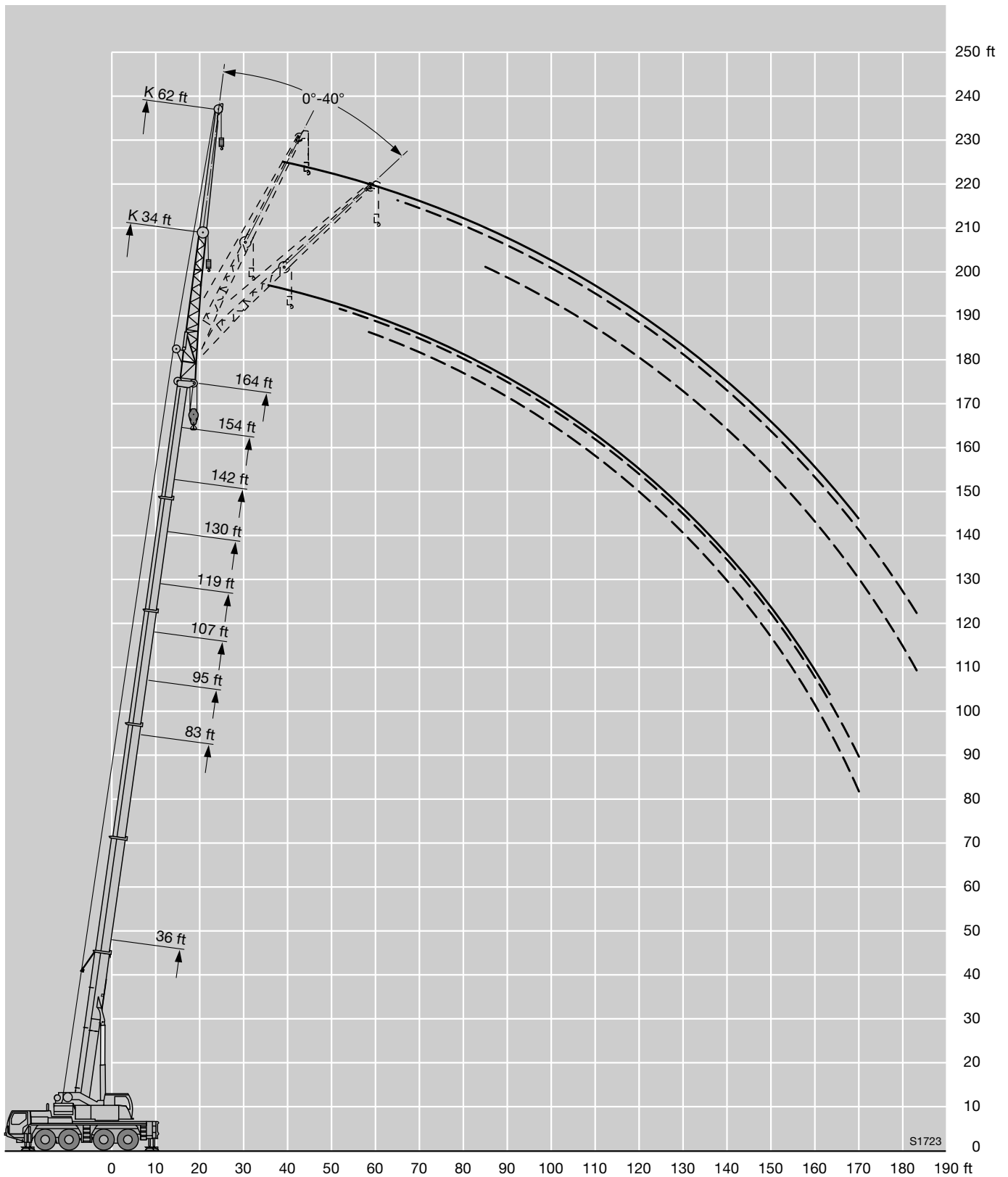
Lifting capacities on the hydraulically variable folding jib



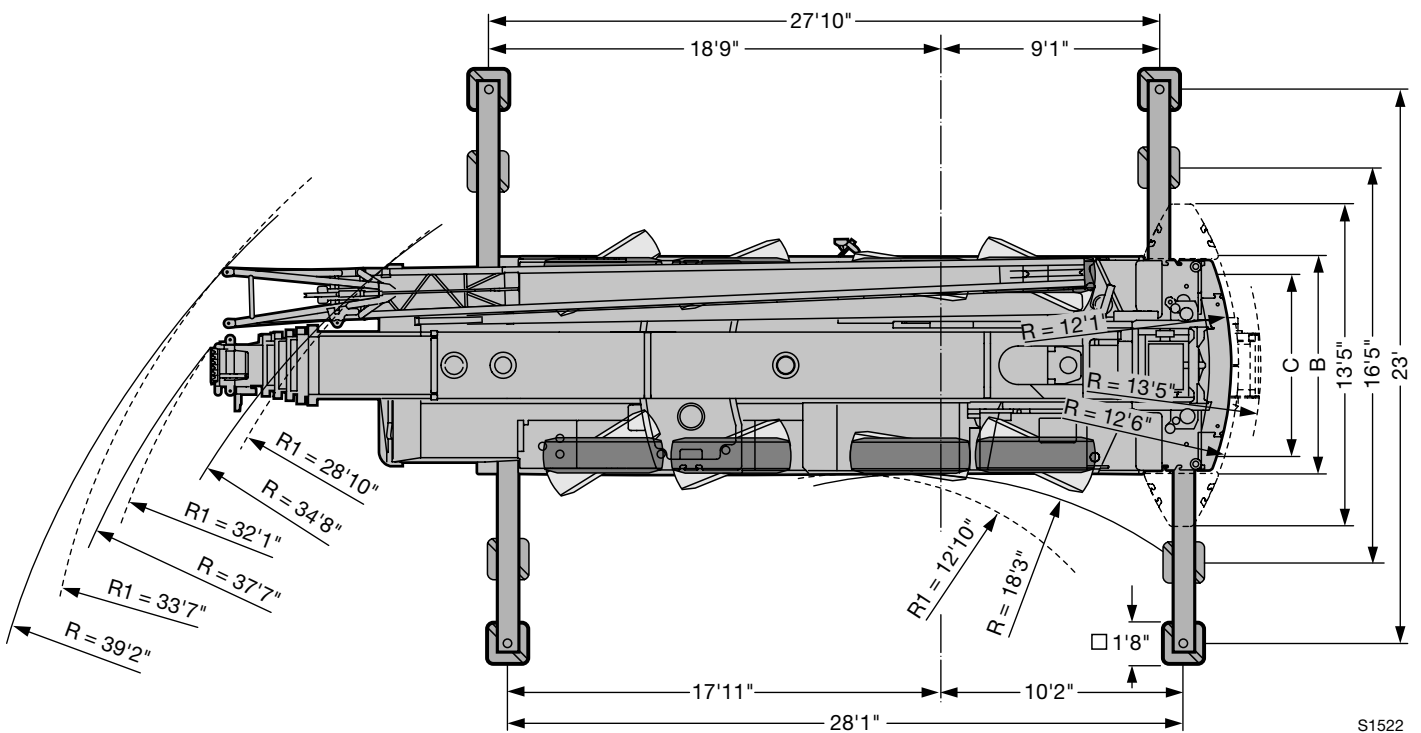
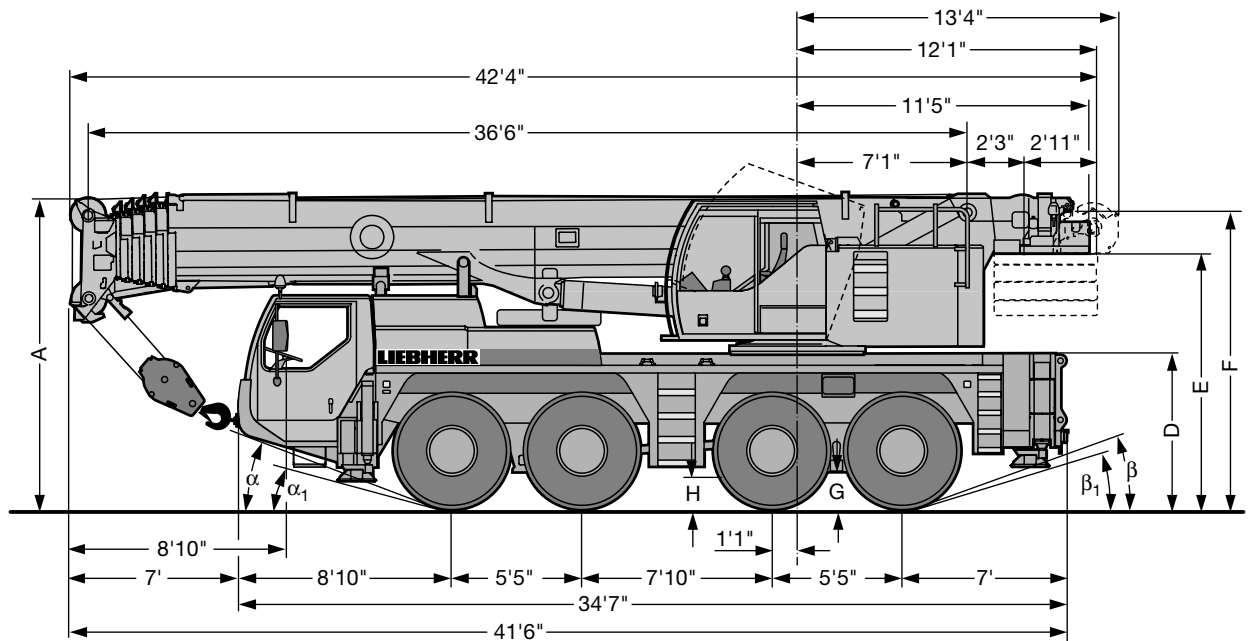
ft	36 ft			95 ft			107 ft			119 ft			130 ft			142 ft			154 ft			164 ft			ft		
	62 ft			62 ft			62 ft			62 ft			62 ft			62 ft			62 ft								
	0°	20°	40°	0°	20°	40°	0°	20°	40°	0°	20°	40°	0°	20°	40°	0°	20°	40°	0°	20°	40°	0°	20°	40°			
12	9																								12		
14	9																									14	
17	9																									17	
20	9																									20	
23	9																									23	
26	8.8			9																						26	
29	8.6	7.3		9			8.5																			29	
32	8.4	7.3		9			8.5																			32	
35	8.1	7.3		9			8.5			8.3																35	
38	7.9	7.2		9			8.5			8.3			8.3													38	
44	7.5	6.9		8.9	7.3		8.5			8.3			8.3			7.8										44	
50	7	6.5	5.8	8.6	7.3		8.3	7		8.1	7		8.2			7.8			6.8				6.1			50	
56	6.4	6.2	5.7	8.3	7.2		8.1	7		8	6.9		8.1	7		7.7	6.8		6.8				6.1			56	
62	5.9	5.9	5.6	8	6.9	5.8	7.9	6.9	5.8	7.8	6.8		8	6.9		7.7	6.8		6.8	6.3			6.1	5.8		62	
68	5.4	5.6	5.4	7.7	6.7	5.8	7.6	6.7	5.8	7.6	6.6	5.6	7.8	6.7	5.6	7.5	6.7		6.8	6.3			6.1	5.8		68	
74	5	5.2	5.3	7.5	6.5	5.7	7.4	6.5	5.7	7.4	6.5	5.6	7.5	6.6	5.6	7.4	6.5	5.6	6.8	6.2	5.3			6.1	5.8		74
80	4.6	4.8	5	7.2	6.3	5.6	7.1	6.3	5.6	7.2	6.3	5.6	7.3	6.4	5.6	7.2	6.3	5.6	6.7	6	5.3	6.1	5.8	5.1		80	
86				6.8	6.1	5.6	6.8	6.1	5.5	6.9	6.1	5.5	7.2	6.2	5.6	7	6.2	5.5	6.6	5.9	5.3	6	5.7	5.1		86	
92				6.5	6	5.5	6.6	6	5.4	6.6	6	5.4	7	6.1	5.5	6.9	6	5.4	6.5	5.8	5.3	5.9	5.6	5.1		92	
98				6.1	5.8	5.4	6.2	5.8	5.4	6.4	5.8	5.4	6.8	6	5.4	6.7	5.9	5.3	6.3	5.7	5.2	5.8	5.5	5.1		98	
104				5.7	5.5	5.3	5.9	5.7	5.3	6.1	5.7	5.3	6.6	5.8	5.3	6.4	5.8	5.3	6.2	5.6	5.2	5.7	5.4	5.1		104	
110				5.4	5.3	5.2	5.6	5.4	5.3	5.8	5.5	5.3	6.4	5.7	5.3	6	5.7	5.3	5.7	5.5	5.1	5.4	5.2	5.1		110	
116				5.2	5	5	5.3	5.2	5.2	5.5	5.3	5.2	5.8	5.6	5.3	5.7	5.6	5.2	5	5.4	5.1	4.8	5.1	5		116	
122				4.9	4.8	4.9	5	5	5	5.3	5.1	5.1	5.4	5.5	5.2	5.2	5.3	5.2	4.4	5.1	5.1	4.1	4.9	4.9		122	
128				4.7	4.6	4.7	4.7	4.7	4.8	5	4.9	4.9	5.1	5.2	5.2	4.6	5.1	5.1	3.8	4.6	5	3.5	4.4	4.7		128	
134				4.5	4.4	4.5	4.5	4.5	4.6	4.8	4.7	4.8	4.6	4.9	5	4	4.7	4.9	3.2	4	4.7	3	3.8	4.4		134	
140				4.3	4.3		4.2	4.3	4.4	4.5	4.5	4.6	4.1	4.6	4.7	3.5	4.1	4.6	2.7	3.5	4	2.5	3.3	3.9		140	
146							4	4.1	4.2	4.2	4.3	4.5	3.6	4.1	4.5	3	3.6	4.1	2.3	2.9	3.5	2	2.8	3.3		146	
152							3.8	3.9		3.7	4.1	4.2	3.2	3.6	3.9	2.6	3.1	3.5		2.5	2.9		2.3	2.8		152	
158										3.3	3.6		2.7	3.1	3.3	2.2	2.7	3		2	2.4			2.3		158	
164										2.9	3.1		2.3	2.6	2.8	1.8	2.3	2.5		1.6	1.9			1.8		164	
170										2.5	2.6		1.9	2.2	2.2	1.5	1.8	2			1.5					170	
176													1.6	1.8												176	

TAB 150354 / 150364 / 150374

Lifting heights




Dimensions



S1522

R₁ = All-wheel steering

	Dimensions												
	A	A	B	C	D	E	F	G	H	α	α_1	β	β_1
16.00 R 25	13'	0'4" *	9'9"	7'7"	6'4"	10'6"	12'2"	1'5"	1'6"	20°	15°	20°	17°

* lowered

Weights



Axle	1	2	3	4	Total weight (lbs)
lbs	26400	26400	26400	26400	105600 ¹⁾

¹⁾ with 14800 lbs counterweight








Load (kips)	No. of sheaves	No. of lines	Weight lbs
176.3	7	14	1100
128.7	5	10	1100
84.4	3	7	992
35.3	1	3	606
12.5	-	1	309

Working speeds



16.00 R 25	mph													R 1	R 2	
		1	2	3	4	5	6	7	8	9	10	11	12			
		3.5	4.5	5.8	7.5	9.5	12.2	16	20.6	26.5	34	43.2	50	3.8	4.9	53.1 %
		1.6	2.1	2.6	3.4	4.3	5.5	7.2	9.3	11.9	15.4	19.5	25	1.7	2.2	61.7 %



Drive	infinitely variable	Rope diameter / Rope length	Max. single line pull
	0 – 410 ft/min single line	0'7" / 853 ft	12800 lbs
	0 – 410 ft/min single line	0'7" / 853 ft	12800 lbs
	0 – 1.7 rpm		
	approx. 50 seconds to reach 83° boom angle		
	approx. 330 seconds for boom extension from 36 ft – 164 ft		

Equipment

Crane carrier

Frame	Self-manufactured, weight-optimized and torsion resistant box-type design of high-tensile structural steel.
Outriggers	4-point supporting system, hydraulically telescopic into horizontal and vertical direction. Automatic levelling of crane. Electronic inclination indicator.
Engine	6-cylinder Diesel, make Liebherr, type D846 A7, watercooled, output 350 kW (476 h.p.) at 1900 min ⁻¹ , max. torque 1637 lbs-ft at 1200 – 1500 min ⁻¹ . Exhaust emissions acc. to 97/68/EG stage 3 and EPA/CARB Tier 3. Fuel reservoir: 106 gallons.
Transmission	ZF 12-speed gear box with automatic control system AS-TRONIC. ZF-intarder fitted directly to the gear. Two-stage transfer case with lockable transfer differential.
Axles	Welded design, made of high-tensile fine grained steel. All Axles steerable. Axles 2, 3 and 4 are planetary axles with differential locks.
Suspension	All axles are mounted on hydropneumatic suspension and are lockable hydraulically.
Tyres	8 tyres, size: 16.00 R 25.
Steering	ZF-servocom power steering, dual circuit system, with hydraulic servo system and auxiliary pump circuit. At road travel, the 4 th axle is steered electrohydraulically, and fixed for straight travel from 18.6 mph onwards. Steering acc. to EG directive 70/311/EWG.
Brakes	Service brake: Dual circuit, all-wheel servo-air brake. Parking brake: Spring brake actuator, acting on the wheels of the 1 st , 2 nd and 3 rd axle. Sustained-action brakes: Engine brake as exhaust retarder with Liebherr additional brake system ZBS. Intarder on gear. ABV in conjunction with ASR. Brakes acc. to EG directives 71/320 EWG.
Driver's cab	Spacious, steel made, corrosion resistant cab, cataphoretic dip-primed, on resilient suspension with hydraulic shock absorbers, sound and heat absorbing internal panelling acc. to EG directive, safety glazing, operating and control instruments, comfortably equipped.
Electrical system	Modern data bus technique, 24 Volt DC, 2 batteries of 170 Ah each, lighting according to traffic regulations.

Crane superstructure

Frame	Self-manufactured, cataphoretic dip-primed weight-optimized and torsion resistant welded design of high-tensile structural steel; linked by a triple-row roller slewing ring to the carrier for continuous rotation.
Crane engine	4-cylinder Diesel, make Liebherr, type D934S A6, watercooled, output 145 kW (197 h.p.) at 1800 min ⁻¹ , max. torque 678 lbs-ft at 1100 min ⁻¹ – 1500 min ⁻¹ . Exhaust emissions acc. to 97/68/EG stage 3 and EPA/CARB Tier 3. Fuel reservoir: 74 gallons.
Crane drive	Diesel-hydraulic, with 1 axial piston variable displacement pump, with servo-control and capacity control, 1 double gear pump, open controlled oil circuits. Compact hydraulic drive flanged to the Diesel engine. Drive assembly completely enclosed for noise abatement.
Control	Electric "Load Sensing" control, simultaneous operation of 4 working motions, 2 self-centering hand control levers (joy-stick type).
Hoist gear	Axial piston fixed displacement motor, Liebherr hoist drum with integrated planetary gear and spring-loaded static brake. Hoist gear is driven through a controlled open oil circuit.
Luffing gear	1 differential ram with safety check valves.
Slewing gear	Axial piston fixed displacement motor, planetary gear, spring-loaded static brake. Slewing gear invertible from released to locked as a standard feature.
Crane cab	All-steel construction, entirely galvanized, powder coated, with safety glazing, operating and control instruments, comfortably equipped, cab tiltable backwards.
Safety devices	LICCON safe load indicator, test system hoist limit switch, safety valves to prevent pipe and hose ruptures.
Telescopic boom	Buckling and torsion resistant design of high-tensile structural steel, oviform boom profile, 1 base section and 5 telescopic sections. All telescopic sections hydraulically extendable independent of one another. Rapid-cycle telescoping system "Telematik". Boom length: 36 ft – 164 ft.
Counterweight	14800 lbs basic counterweight.
Electrical system	Modern data bus technique, 24 Volt DC, 2 batteries of 170 Ah each.
Swing-away jib	34 ft – 62 ft long, mountable to the telescopic boom at 0°, 20° or 40°. Hydraulic ram for operating the swing-away jib from 0° – 40° (option).
Telescopic boom extension	23 ft long lattice section, thus 23 ft higher pinning point for swing-away jib.
2nd hoist gear	For two-hook operation or for operation with swing-away jib if the hoist rope shall remain reeved.
Additional counterweight	31500 lbs for a total counterweight of 46300 lbs.
Drive 8 x 8	Additional drive of the 1 st axle.

BAY CRANE



**New York's Leader in Crane Rental and Specialized
Transportation Solutions**

BAY CRANE SERVICE
11-02 43rd AVENUE, LONG ISLAND CITY, NY11101
TEL: 718-392-0800 FAX: 718-392-2353